

POWER UNITS - DHL SERIES

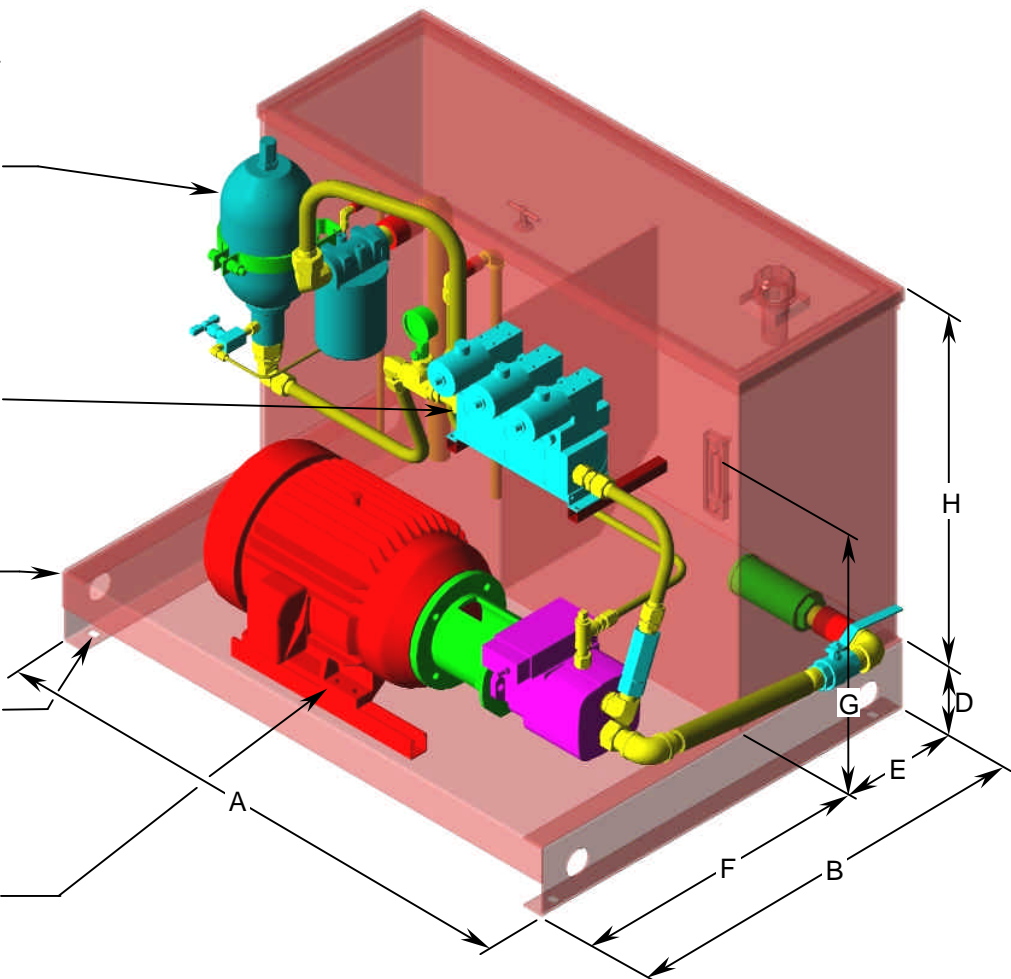
SOME OF THE OPTIONS AVAILABLE INCLUDE ACCUMULATORS, NEEDLE VALVES, RETURN FILTERS, RELIEF VALVES, SUCTION STRAINERS, TOP SERVICE COVERS, PRESSURE GAGES, EVEN EXTRA CONNECTIONS FOR EASIER INSTALLATION.

DYNEX OFFERS A WIDE RANGE OF DIRECTIONAL CONTROL VALVES, SIZES D03 TO D08H OR USE YOUR OWN. FROM A 1 STATION SUBPLATE TO MULTI-STATION MANIFOLDS. COMBINE THESE WITH STACK VALVES AND YOU CAN ACHIEVE LIMITLESS CIRCUIT SOLUTIONS.

RESERVOIR STYLE OFFERS A RIGHT ANGLE TANK WITH HINGED TOP COVER, FULL BAFFLE(S), OIL SIGHT GAGE, AND FILLER/BREATHER. SIZES 10 TO 300 GALLONS.

1" X 3/4" SLOTTED HOLE

ELECTRIC MOTOR - 1 TO 100 HORSEPOWER. OPEN DRIP PROOF, TOTALLY ENCLOSED FAN COOLED, AND EXPLOSION PROOF ARE SOME OF THE CHOICES.



MODEL	DHL10	DHL18	DHL30	DHL45	DHL60	DHL80
A(W)	25	30	36	40	48	66
B(L)	24	30	30	30	36	36
C(H)	23	25	30	31	36	36
D	6.18	6.18	6.18	6.18	6.18	6.5
E	11.25	13.25	14.25	14.25	16.25	16.25
F	12.75	16.75	15.75	15.75	19.75	19.75
G	10	12	17	18	23	23
H	17	19	24	25	30	30
WGT.#	138	180	225	250	340	685
MODEL	DHL100	DHL120	DHL150	DHL200	DHL250	DHL300
A(W)	60	72	72	72	72	72
B(L)	48	48	48	48	48	48
C(H)	36	36	36	42	48	54
D	6.5	6.5	6.5	6.5	6.5	6.5
E	19.5	22.5	24.5	24.5	24.5	24.5
F	28.5	25.5	23.5	23.5	23.5	23.5
G	23	23	23	29	41	41
H	30	30	30	36	42	48
WGT.#	740	1010	1012	1085	1275	1430

STANDARD FEATURES:

- FLOODED SUCTION DESIGN
- 2 FULL BAFFLES EXCEPT ON SIZES 10-60 GALLON
- FULL ACCESS HINGED TOP COVER
- MAGNETIC DRAIN PLUG
- LEVEL GAGE WITH THERMOMETER
- FILLER/BREATHER
- STANDARD EXTERIOR PAINT
- SINGLE SIDE EQUIPMENT BASE



Issued: 05/02
DHL_HPU.doc

POWER UNITS - DHL SERIES

ORDERING CODE

DHL - 30 - 09J4203 - PVWH06 - O - V2 - S - PR - RBF

STYLE
DHL - RIGHT ANGLE TANK

SIZE
10 - 10 GALLON CAPACITY
15 - 15 GALLON CAPACITY
20 - 20 GALLON CAPACITY
30 - 30 GALLON CAPACITY
40 - 40 GALLON CAPACITY
50 - 50 GALLON CAPACITY
60 - 60 GALLON CAPACITY
80 - 80 GALLON CAPACITY
100 - 100 GALLON CAPACITY
120 - 120 GALLON CAPACITY
150 - 150 GALLON CAPACITY
200 - 200 GALLON CAPACITY
250 - 250 GALLON CAPACITY
300 - 300 GALLON CAPACITY

SS - ADD THIS SUFFIX FOR STAINLESS STEEL

PUMP
SPECIFY A PUMP

FLUID
O - PETROLEUM BASE OIL
WG - WATER GLYCOL
PE - PHOSPHATE ESTER
X - SPECIAL

VALVES
OMIT - NONE
V1 - 1 VALVE
V2 - 2 VALVES
V3 - 3 VALVES
V4 - 4 VALVES
V5 - 5 VALVES
DM* - DRILLED MANIFOLD

OPTIONS

(OTHERS AVAILABLE, USE QTY. PREFIX FOR ALL CODES)

S - SUCTION STRAINER
EPC* - EXTRA PRESSURE CONNECTION
ERC* - EXTRA RETURN CONNECTION
BV - LP BALL VALVE
PR - PRESSURE GAGE
GNV - GAGE SHUTOFF
GS - GAGE SNUBBER
NV - NEEDLE VALVE
HFBV - XHP BALL VALVE
LPC - CHECK VALVE, 5 PSI
HPC - CHECK VALVE, 65 PSI
SPRV - SUBPLATE WITH RELIEF VALVE
RBF - RETURN FILTER
PBF - PRESSURE FILTER
PS - PRESSURE SWITCH
ACC - ACCUMULATOR
W - WATER COOLER
WR - WATER MODULATING VALVE
IH - IMMERSION HEATER
A - AIR RADIATOR
AE - ELECTRIC FAN RADIATOR
JIC - TERMINAL BOX
MS - MOTOR STARTER
STO - SOLENOID/SWITCH WIRING CORD
COND - SOLENOID/SWITCH WIRING SEALTITE
MW - MOTOR WIRING
DH - FULL ENCLOSURE
DP - DRIP PAN

ELECTRIC MOTOR CODE

FACE TYPE	MOTOR MOUNT	SHAFT	HP	RPM	ENCLOSURE	VOLTAGE
09 - 4 1/2" C'FACE	OMIT - FOOT MOUNT	OMIT - MALE KEYED SHAFT	E - 1	1 - 1000	1 - ODP-SE 2	01 - 115/230/60/1
06 - 8 1/2" C'FACE	V - VERTICAL MOUNT	CC - CLOSE COUPLED	F - 1 1/2	2 - 1200	2 - TEFC-SE 2	02 - 110/220/50/1
05 - 10 1/2" C'FACE			G - 2	3 - 1440	3 - DDM-SE 2	03 - 230/460/60/3
08 - 12 1/2" C'FACE			H - 3	4 - 1800	4 - EXP-SE 2	04 - 220/440/50/1
04 - 16" C'FACE			J - 5	5 - 2875	9 - CP-SE 2	05 - 208/60/3
07 - NONE			K - 7 1/2	6 - 3600		06 - 200/50/3
			L - 10	7 - 870		07 - 380/60/3
			M - 15			08 - 380/50/3
			N - 20			09 - 575/60/3
			P - 25			10 - 575/50/3
			Q - 30			
			R - 40			
			S - 50			
			T - 60			
			U - 75			

ADDITIONAL INFORMATION REQUIRED

- HYDRAULIC SCHEMATIC SHOWING ALL COMPONENTS ON UNIT
- ENVIRONMENTAL CONSIDERATIONS
- DUTY CYCLE IF OTHER THAN CONTINUOUS
- PAINTING REQUIREMENTS
- ANY ADDITIONAL CONSTRUCTION CONSIDERATIONS

NOTE 2:
ODP=OPEN DRIP PROOF
TEFC=TOTALLY ENCLOSED FAN COOLED
DDM=DIRTY DUTY MOTOR
EXP=EXPLOSION PROOF
CP=CHEMICAL PROCESS
SE=SINGLE END MOTOR



Issued: 05/02
DHL_HPU.doc