

## Air Filter

### Characteristics

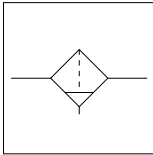
- The air filter is designed for draining and removal of foreign matter. (Element: 5μm)
- The plastic bowl guard does not corrode.
- The draining method is selectable between the push type and the auto drain type.

### Specifications

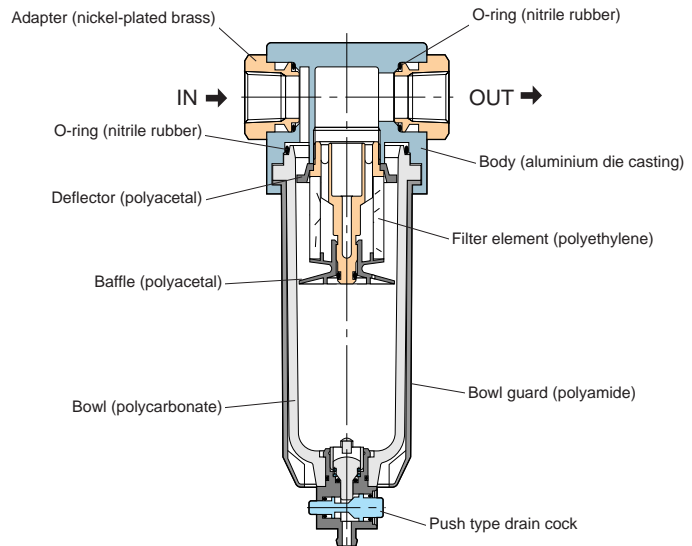
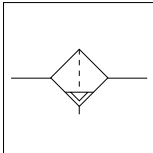
Type	FTA 300-□-MD		FTA 300-□-AD	
Connection bore	Rc1/4(02)	Rc3/8(03)	Rc1/4(02)	Rc3/8(03)
Fluid admitted	Air			
Max. Operating pressure	145psi (1MPa)			
Min. Operating pressure	7.25psi (0.05MPa)		21.75psi (0.15MPa)	
Proof pressure	217.5psi (1.5MPa)			
Service temperature range	41~122°F (5~50°C)			
Filtering capacity	5μm			
Bowl capacity	30cc			

### Construction

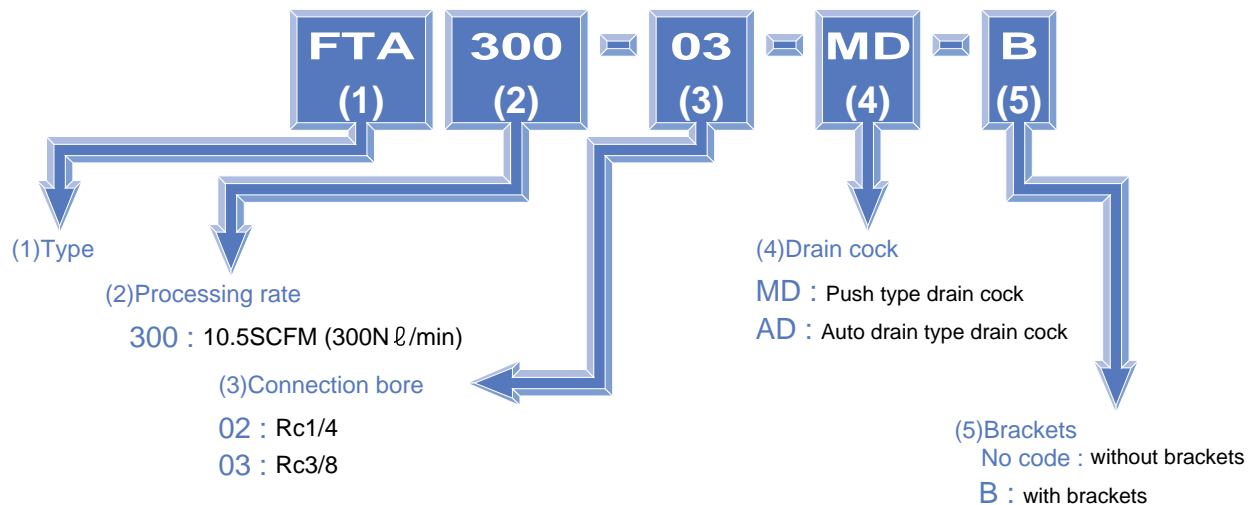
Symbol for air filter



Symbol for auto drain type



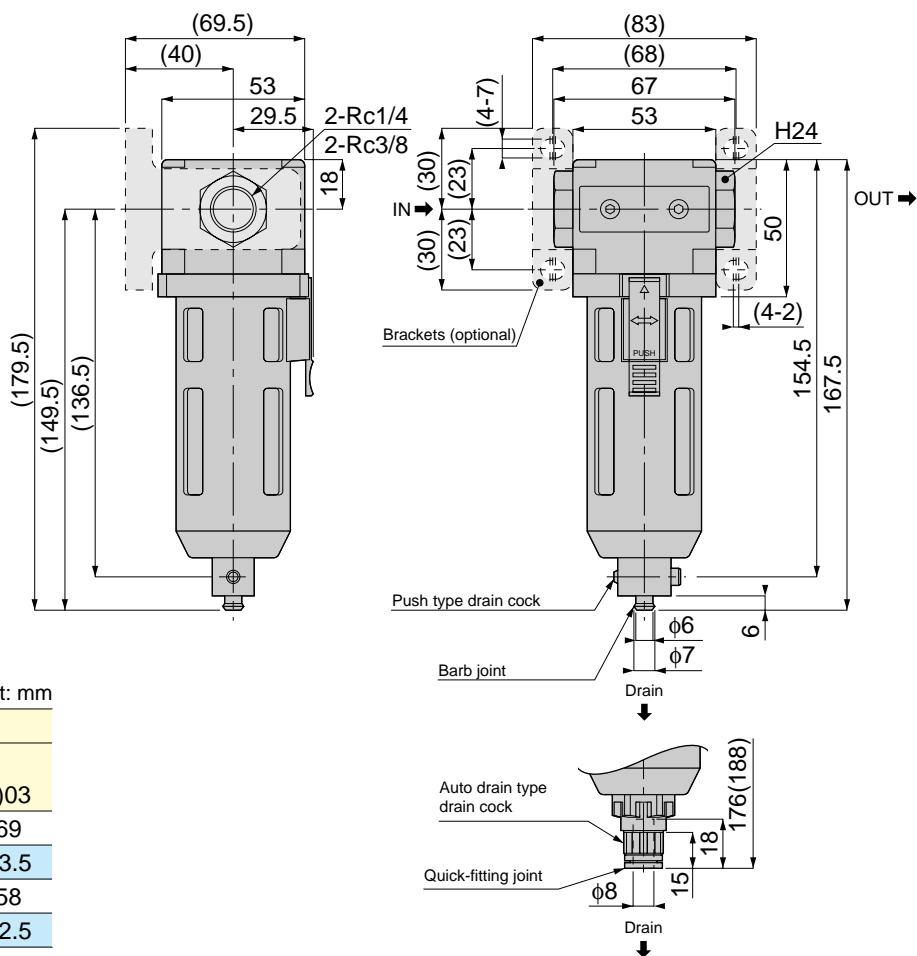
### Model Designation (Example)





# FTA

Air Filter  
(Manual drain, Auto drain)



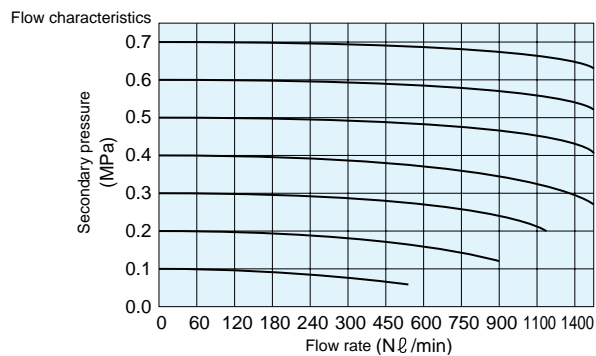
\*The dimension in ( ) includes bracket.

Unit: mm

Model	Weight (g)	
	(* )02	(* )03
FTA 300-□-MD	390	369
FTA 300-□-AD	404.5	383.5
FTA 300-□-MD-B	465	458
FTA 300-□-AD-B	479.5	472.5

(\* ) Connection bore

## Characteristics



## Mist Filter

### Characteristics

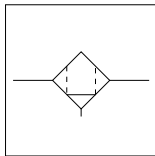
- The mist filter is designed for removal of foreign matter as well as oil mist. (Element: 0.3 $\mu$ m)
- The plastic bowl guard does not corrode.
- The draining method is selectable between the push type and the auto drain type.

### Specifications

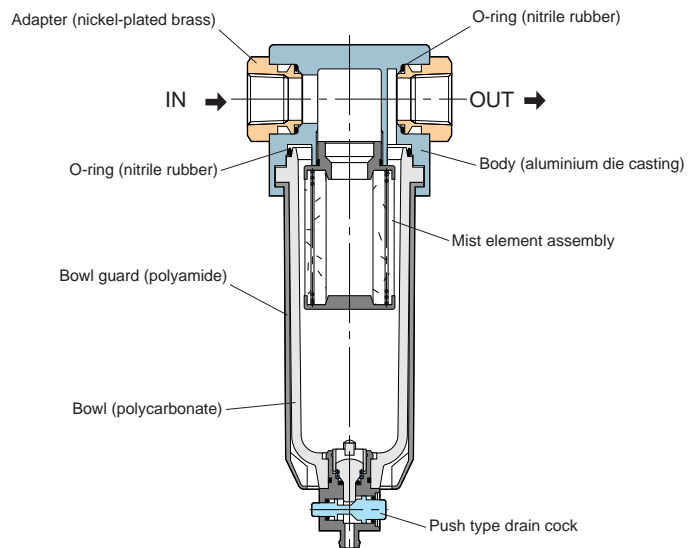
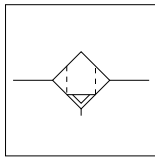
Type	FTD 300-□-MD		FTD 300-□-AD	
Connection bore	Rc1/4(02)	Rc3/8(03)	Rc1/4(02)	Rc3/8(03)
Fluid admitted	Air			
Max. Operating pressure	145psi (1MPa)			
Min. Operating pressure	7.25psi (0.05MPa)		21.75psi (0.15MPa)	
Proof pressure	217.5psi (1.5MPa)			
Service temperature range	41~122°F (5~50°C)			
Filtering capacity	0.3 $\mu$ m (Collection efficiency : 99.9%)			
Bowl capacity	30cc			

### Construction

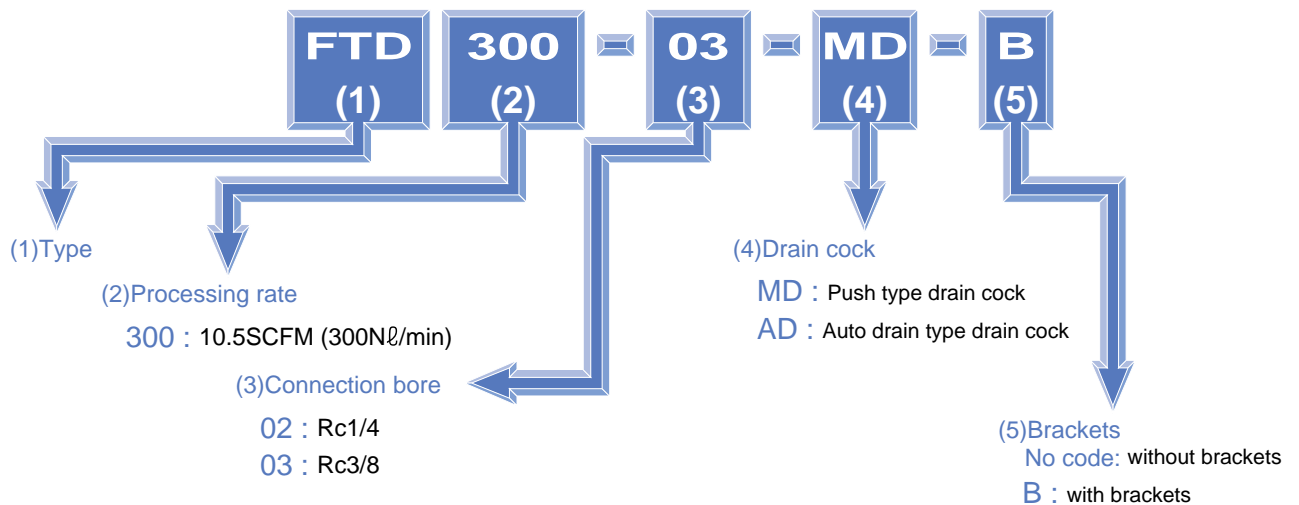
Symbol for mist filter



Symbol for auto drain type



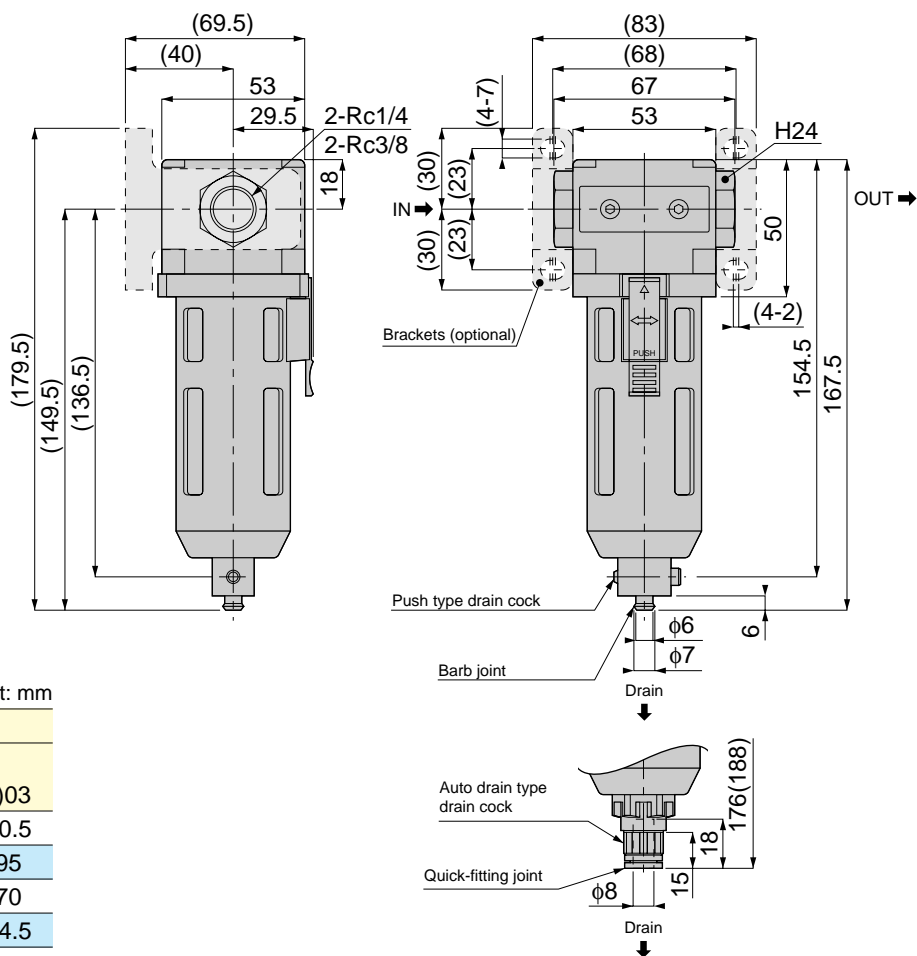
### Model Designation (Example)





# FTD

Mist Filter  
(Manual drain, Auto drain)



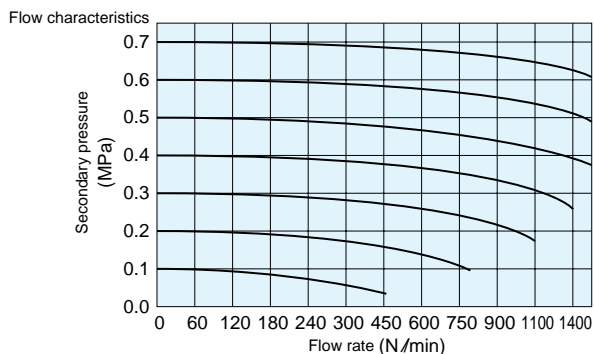
\*The dimension in ( ) includes bracket.

Unit: mm

Model	Weight (g)	
	(* )02	(* )03
FTD 300-□-MD	401.5	380.5
FTD 300-□-AD	416	395
FTD 300-□-MD-B	477	470
FTD 300-□-AD-B	491.5	484.5

(\* ) Connection bore

## Characteristics



## Micromist Filter

### Characteristics

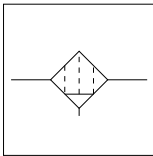
- The mist filter is designed for removal of foreign matter as well as oil mist. (Element: 0.01 $\mu$ m)
- The plastic bowl guard does not corrode.
- The draining method is selectable between the push type and the auto drain type.

### Specifications

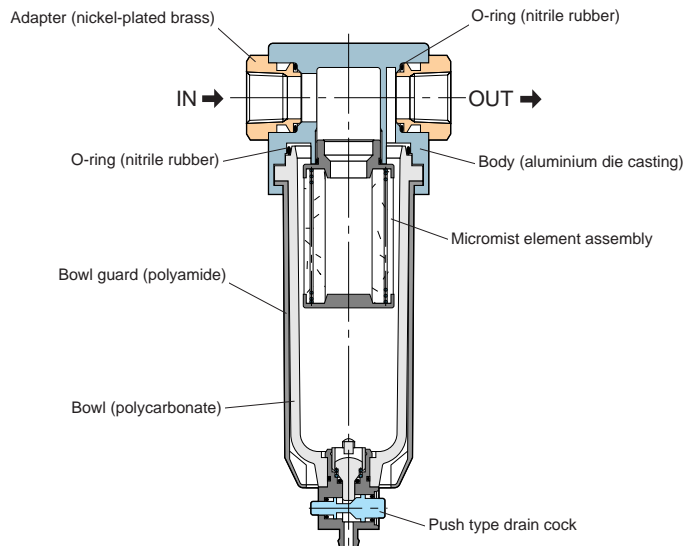
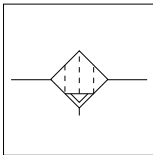
Type	FTM 300-□-MD		FTM 300-□-AD	
Connection bore	Rc1/4(02)	Rc3/8(03)	Rc1/4(02)	Rc3/8(03)
Fluid admitted	Air			
Max. Operating pressure	145psi (1MPa)			
Min. Operating pressure	7.25psi (0.05MPa)		21.75psi (0.15MPa)	
Proof pressure	217.5psi (1.5MPa)			
Service temperature range	41~122°F (5~50°C)			
Filtering capacity	0.01 $\mu$ m (Collection efficiency : 99.9%)			
Bowl capacity	30cc			

### Construction

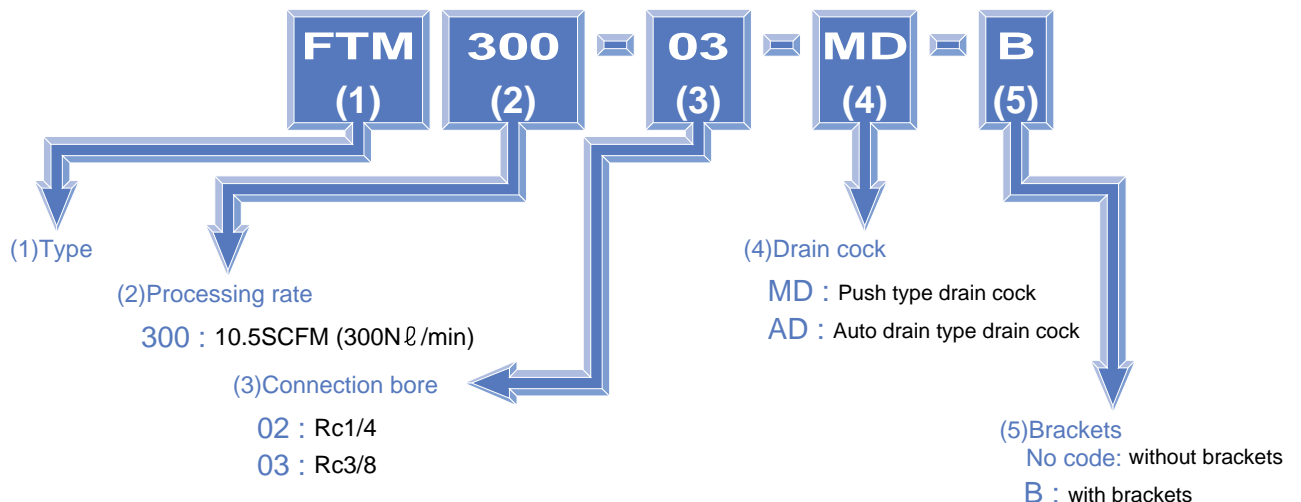
Symbol for micromist filter



Symbol for auto drain type



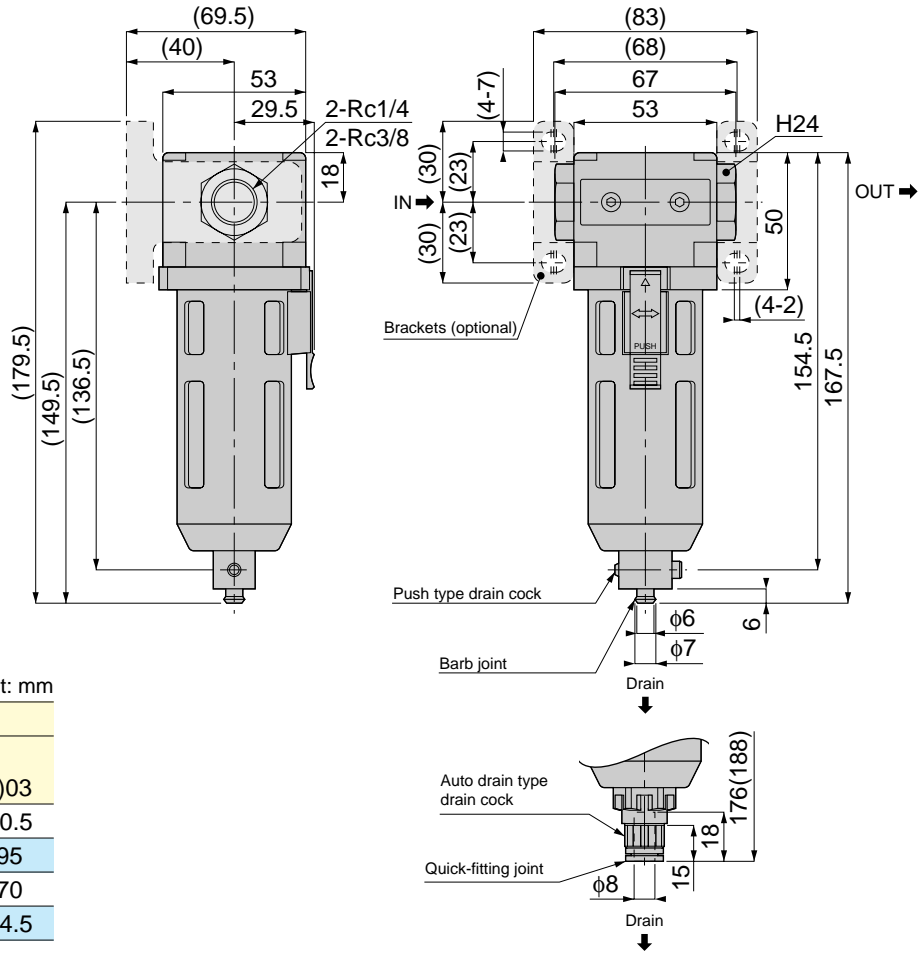
### Model Designation (Example)





# FTM

Micromist Filter  
(Manual drain, Auto drain)



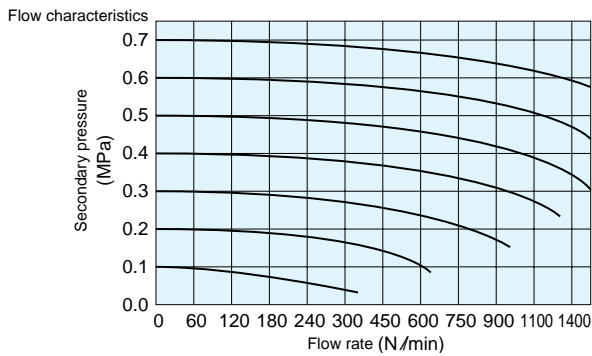
\*The dimension in ( ) includes bracket.

Unit: mm

Model	Weight (g)	
	(* )02	(* )03
FTM 300-□-MD	401.5	380.5
FTM 300-□-AD	416	395
FTM 300-□-MD-B	477	470
FTM 300-□-AD-B	491.5	484.5

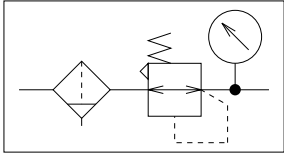
(\* ) Connection bore

## Characteristics

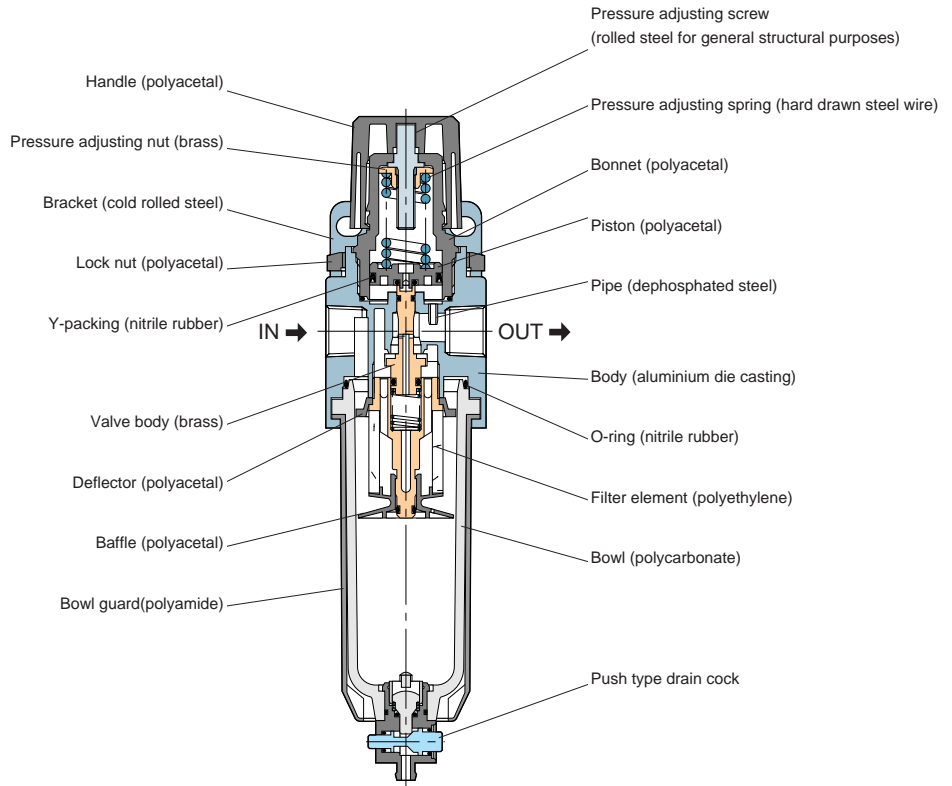
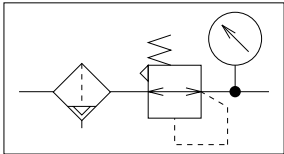


Construction

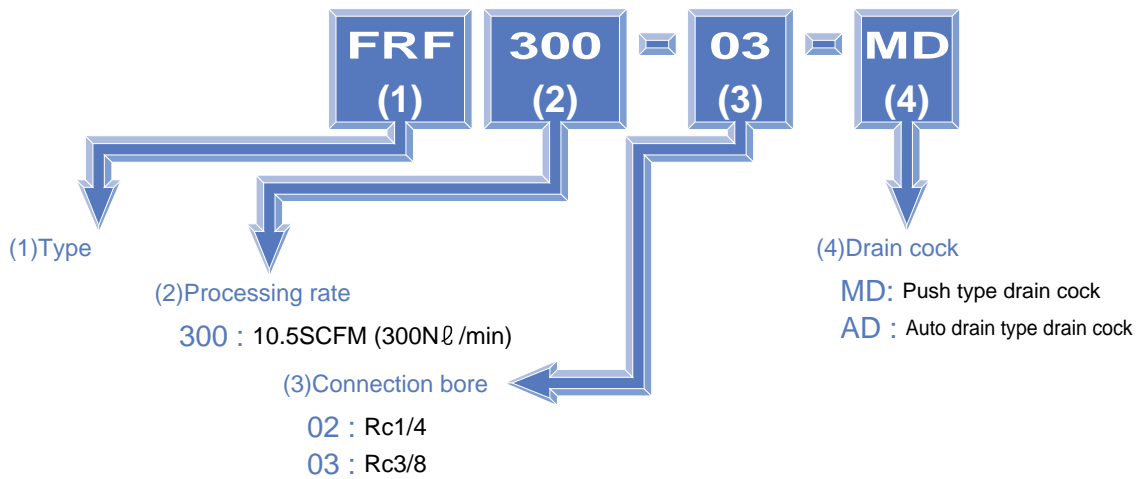
Symbol for filter regulator



Symbol for auto drain type



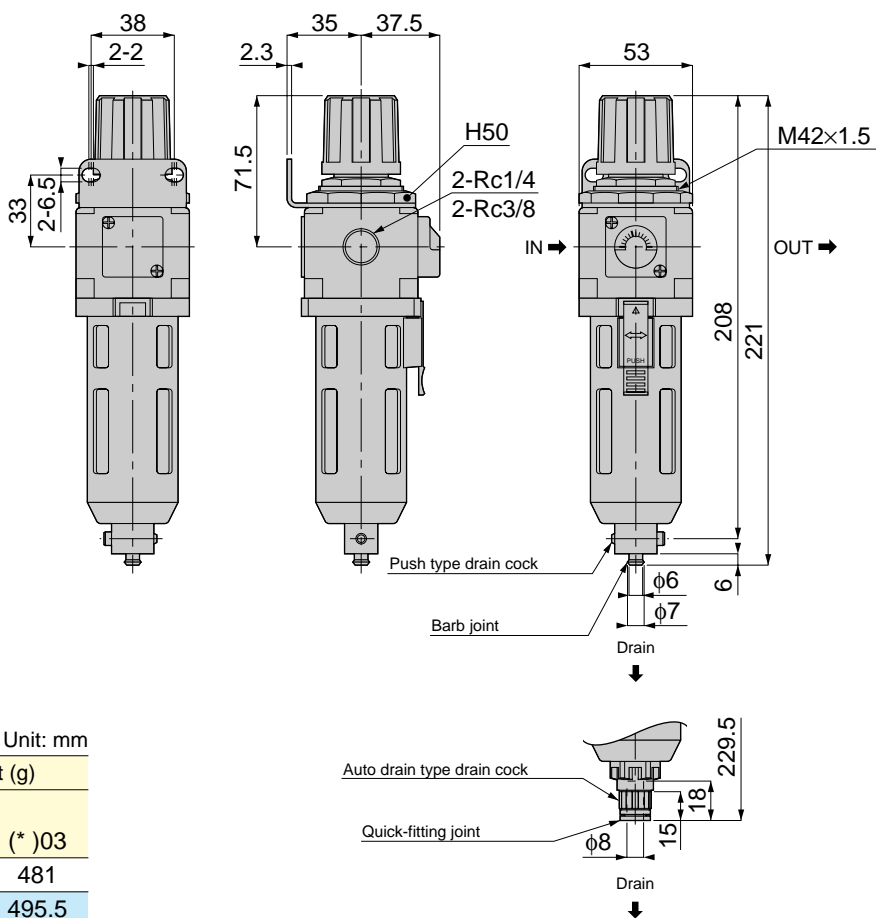
Model Designation (Example)





FRF

Filter Regulator



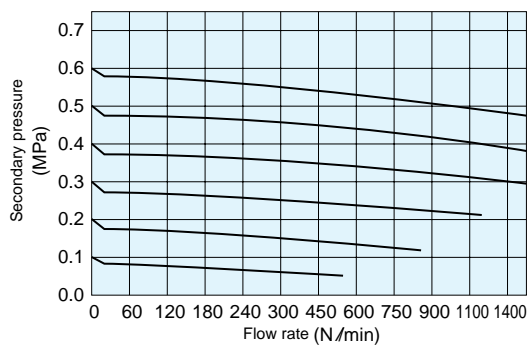
Unit: mm

Model	Weight (g)	
	(*)02	(*)03
FRF 300-□-MD	485	481
FRF 300-□-AD	499.5	495.5

(\*) Connection bore

## Characteristics

Flow characteristics



Pressure characteristics

