

One-touch Fittings & Tubes with 1.8mm OD

● *First time in the industry!!*

OD 1.8mm one-touch fittings for the first time in the pneumatic industry.

● *Only 4mm of bending radius!!*

Min. bending radius is only 4mm, thus establishing a very compact piping.

New Products !!

● *A Variety of tube colors!!*

10 colors are available in standard.

● *A Variety of body shapes!!*

11 types to suit a variety of piping needs.



PC
Straight

PL
Elbow



POC
Straight
with hex hole



PU
Straight Union



PG
Different Dia.
Straight union



PV
Union Elbow



PE
Union Tee



PB
Tee



PD
Branch Tee



PGJ
Reducer



PP
Plug

● *Very Compact!!*

About 80% of volumetric size of the conventional PISCO 4mm OD mini fittings.

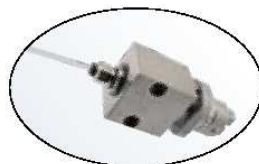
● **Applications**



Small Cylinder



Small Solenoid valve



Miniature Gripper

- Small workpieces-handling machine. (e.g. semi-conductors.)
- Applications where reduction in cost is necessary by energy-savings.

● Specification

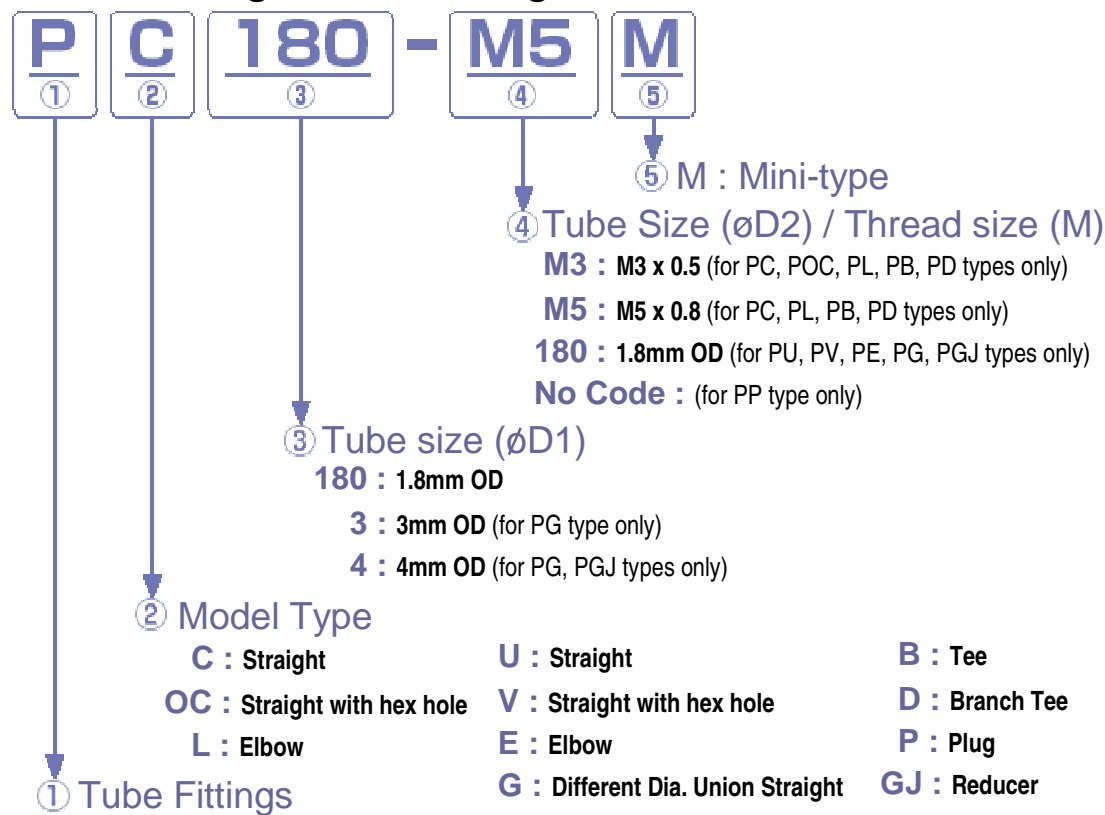
One-touch Fittings

Fluid admitted	Air
Max. Operating pressure	145 psi (1MPa)
Applicable vacuum level	-30in.Hg (-100kPa)
Operating temp. range	32~140deg.F (0~60deg.C)

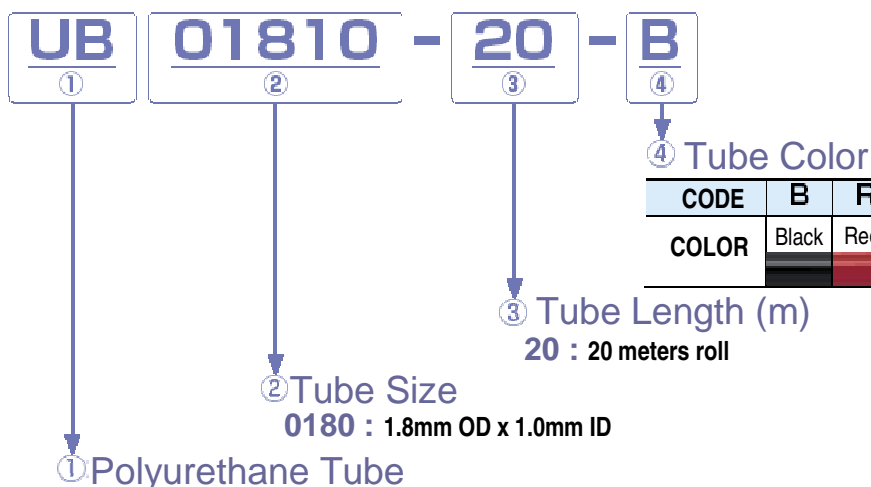
Tube

Fluid admitted	Air
Max. Operating pressure at 20 deg. C	102 psi (0.7MPa)
Applicable vacuum level	-30in.Hg (-100kPa)
Operating temperature range	5~140deg.F (-15~60deg.C) without freezing

● Model Designation of Fittings



● Model Designation of Tube



* Contact PISCO for more details.

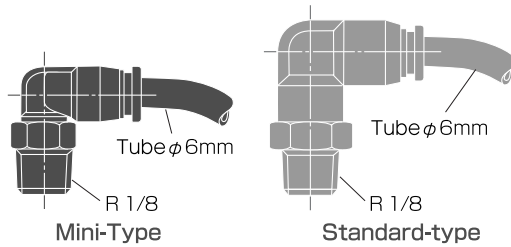
Ultra-small Quick-fitting Joint for Pneumatic Piping

Tube Fitting Mini-Type

Package 10 pcs. in a bag

- This ultra-small quick-fitting joint is used in pneumatic piping.
- This quick-fitting joint is 40% smaller than the standard type fitting.
- The elliptical, ultra-small release ring facilitates connecting and disconnecting the tube.

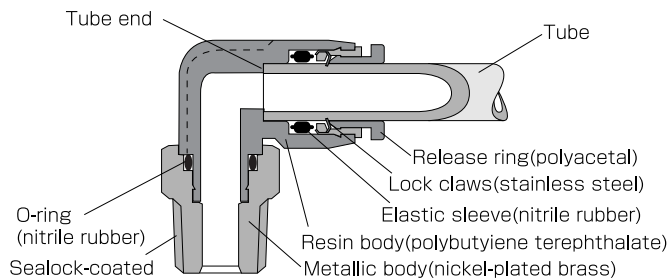
Comparison with Standard Type.



Specifications

Fluid admitted	Air	
Service pressure range	0~150psi	0~0.9MPa(0~9.18kg/cm ²)
Working vacuum	-29.5in.Hg	-750mmHg
Service temperature range	32~140°F	0~60°C

Construction



Model Designation(Example)

PC 6 - 01 M 6
① ② ③ ④ ⑤

①Type

②Tube Dia.(ϕ D)

	mm size			in. size	
Code	3	4	6	5/32	1/8
Dia.	ϕ 3	ϕ 4	ϕ 6	ϕ 5/32	ϕ 1/8

③Thread size(R)

	Metric thread			Taper thread		Cartridge type	
Code	M3	M5	M5	01	02	M6	M8
Size	M3×0.5	M5×0.8	M6×1.0	R1/8	R1/4	M6×0.75	M8×0.75
	Unified fine thread					American standard taper pipe thread	
Code	U10U			N0		N1	
Size	10-32UNF			NPT1/16		NPT1/8	

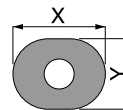
④Mini-type(Code:M)

※Be sure to specify "M":otherwise, the standard will be delivered.

⑤U:Hexagon flat-to-flat inch spec.(NPT)

No code:Hexagon flat-to-flat metric spec.

X and Y dimension of release ring



Tube size	Φ 3 Φ 1/8	Φ 4	Φ 6
X	7	10	12
Y	8	8	10

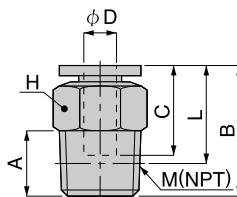
※Some of the 3mm release rings come with:X=10mm, Y=8mm

Detailed Safety Instructions

Before using the PISCO device, be sure to read the "Safety Instructions", "Common Safety Instructions for Products Listed in This Manual" on page 3 and "Common Safety Instructions for Quick-Fitting Joint" on pages 4 and 5

PC
MINI TYPE

Straight



Unit : inch

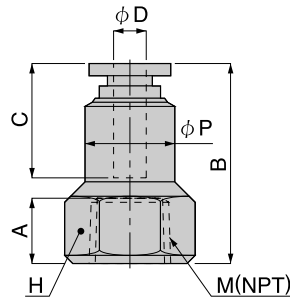
Model	Tube dia. φD(mm)	M	A	B	L	C	H	Weight (OZ)	Orifice φMM	Eff.a. mm2	CV
PC 3-M3M	3	M3	0.12	0.51	0.39	0.37	0.22	0.04	1.20	0.70	0.04
PC 3-M5M	3	M5	0.14	0.61	0.47	0.43	0.31	0.14	2.00	3.00	0.16
PC 3-M6M	3	M6	0.18	0.65	0.47	0.43	0.31	0.14	2.00	3.00	0.16
PC 4-M3M	4	M3	0.12	0.59	0.47	0.43	0.31	0.07	1.20	0.90	0.05
PC 4-M5M	4	M5	0.14	0.63	0.47	0.43	0.31	0.12	2.40	3.80	0.21
PC 4-M6M	4	M6	0.18	0.65	0.47	0.43	0.31	0.12	2.50	6.30	0.34
PC 4-01M	4	R1/8	0.31	0.63	0.47	0.43	0.39	0.21	2.50	6.40	0.35
PC 6-M5M	6	M5	0.14	0.67	0.53	0.45	0.39	0.18	2.40	3.60	0.20
PC 6-M6M	6	M6	0.18	0.71	0.53	0.45	0.39	0.16	3.00	6.30	0.34
PC 6-01M	6	R1/8	0.31	0.71	0.55	0.45	0.39	0.21	4.60	15.90	0.86
PC 1/8-M3M	1/8	M3	0.12	0.59	0.47	0.43	0.31	0.07	1.20	0.90	0.05
PC 1/8-M5M	1/8	M5	0.14	0.63	0.47	0.43	0.31	0.12	2.40	2.60	0.14
PC 1/8-M6M	1/8	M6	0.18	0.65	0.47	0.43	0.31	0.12	2.50	2.90	0.16
PC 1/8-01M	1/8	R1/8	0.31	0.63	0.47	0.43	0.39	0.23	3.00	2.70	0.15

Unit : inch

Model	Tube dia. φD	NPT	A	B	L	C	H	Weight (OZ)	Orifice φMM	Eff.a. mm2	CV
PC 1/8-U10MU	1/8	10-32UNF	0.14	0.63	0.49	0.43	5/16	0.11	2.40	2.60	0.14
PC 1/8-N0MU	1/8	1/16-27NPT	0.31	0.71	0.55	0.43	7/16	0.26	2.50	2.70	0.15
PC 1/8-N1MU	1/8	1/8-27NPT	0.31	0.63	0.47	0.43	7/16	0.26	2.50	2.70	0.15
PC 5/32-U10MU	5/32	10-32UNF	0.14	0.63	0.49	0.43	5/16	0.11	2.40	3.80	0.21
PC 5/32-N0MU	5/32	1/16-27NPT	0.31	0.71	0.55	0.43	7/16	0.25	2.50	6.40	0.35
PC 5/32-N1MU	5/32	1/8-27NPT	0.31	0.63	0.47	0.43	7/16	0.26	2.50	6.40	0.35

PCF
MINI TYPE

Female Straight



Unit : inch

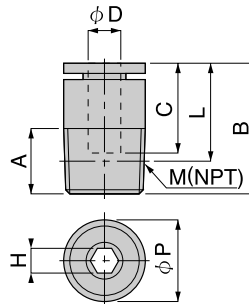
Model	Tube dia. φD(mm)	M	A	B	φP	C	H	Weight (OZ)	Orifice φMM	Eff.a. mm2	CV
PCF 3-M3M	3	M3	0.12	0.51	0.22	0.37	0.22	0.05	3.00	1.40	0.08
PCF 3-M5M	3	M5	0.20	0.59	0.31	0.37	0.31	0.14	2.00	2.80	0.15
PCF 4-M3M	4	M3	0.12	0.55	0.31	0.43	0.31	0.11	3.00	3.50	0.19
PCF 4-M5M	4	M5	0.20	0.67	0.31	0.43	0.31	0.14	2.00	2.60	0.14
PCF 1/8-M3M	1/8	M3	0.12	0.55	0.31	0.43	0.31	0.11	3.00	3.50	0.19
PCF 1/8-M5M	1/8	M5	0.20	0.67	0.31	0.43	0.31	0.14	2.00	2.60	0.14

Unit : inch

Model	Tube dia. φD	NPT	A	B	φP	C	H	Weight (OZ)	Orifice φMM	Eff.a. mm2	CV
PCF 1/8-U10MU	1/8	10-32UNF	0.14	0.69	0.31	0.43	5/16	0.15	2.00	2.60	0.14
PCF 5/32-U10MU	5/32	10-32UNF	0.14	0.69	0.31	0.43	5/16	0.14	2.00	2.60	0.14

POC
MINI TYPE

Hex. Holed Straight



Unit : inch

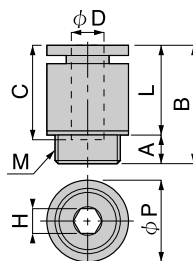
Model	Tube dia. φD(mm)	M	A	B	L	φP	C	H	Weight (OZ)	Orifice φMM	Eff.a. mm2	CV
POC 3-M3M	3	M3	0.12	0.61	0.49	0.31	0.43	0.06	0.11	1.50	1.90	0.10
POC 3-M5M	3	M5	0.14	0.61	0.47	0.31	0.43	0.08	0.11	2.20	2.80	0.15
POC 4-M3M	4	M3	0.12	0.61	0.51	0.31	0.43	0.06	0.11	1.50	1.80	0.10
POC 4-M5M	4	M5	0.14	0.63	0.49	0.31	0.43	0.10	0.14	2.60	5.10	0.28
POC 4-M6M	4	M6	0.18	0.65	0.49	0.31	0.43	0.12	0.14	3.10	7.00	0.38
POC 4-01M	4	R1/8	0.31	0.61	0.45	0.39	0.45	0.12	0.21	3.10	7.40	0.40
POC 6-M5M	6	M5	0.14	0.69	0.55	0.39	0.45	0.10	0.18	2.60	5.20	0.28
POC 6-M6M	6	M6	0.18	0.71	0.53	0.39	0.45	0.12	0.18	3.10	7.10	0.38
POC 6-01M	6	R1/8	0.31	0.69	0.53	0.39	0.47	0.16	0.21	4.20	13.00	0.70
POC 1/8-M3M	1/8	M3	0.12	0.61	0.49	0.31	0.43	0.06	0.11	1.50	1.80	0.10
POC 1/8-M5M	1/8	M5	0.14	0.63	0.47	0.31	0.43	0.10	0.14	2.60	3.30	0.18
POC 1/8-M6M	1/8	M6	0.18	0.65	0.49	0.31	0.43	0.12	0.14	3.10	3.10	0.17

Unit : inch

Model	Tube dia. φD	NPT	A	B	L	φP	C	H	Weight (OZ)	Orifice φMM	Eff.a. mm2	CV
POC1/8-U10MU	1/8	10-32UNF	0.14	0.63	0.49	0.31	0.43	3/32	0.11	2.50	3.20	0.17
POC5/32-U10MU	5/32	10-32UNF	0.14	0.63	0.49	0.31	0.43	3/32	0.11	2.50	4.80	0.26
POC5/32-N1MU	5/32	1/8	0.31	0.63	0.47	0.39	0.43	3/32	0.23	2.50	4.70	0.25



Cartridge

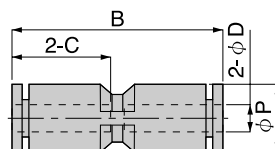


Unit : inch

Model	Tube dia. φD(mm)	M	A	B	L	φP	C	H	Weight (OZ)	Orifice φMM	Eff.a. mm2	CV
PCC 3-M6M	3	M6×0.75	0.14	0.55	0.41	0.31	0.43	0.08	0.11	2.20	2.90	0.16
PCC 4-M6M	4	M6×0.75	0.14	0.55	0.41	0.31	0.43	0.10	0.11	2.60	5.10	0.28
PCC 4-M8M	4	M8×0.75	0.16	0.55	0.39	0.39	0.43	0.12	0.11	3.10	7.30	0.40
PCC 6-M8M	6	M8×0.75	0.16	0.57	0.41	0.39	0.45	0.16	0.14	4.20	12.80	0.69
PCC 1/8-M6M	1/8	M6×0.75	0.14	0.55	0.41	0.31	0.43	0.08	0.11	2.60	3.00	0.16



Union Straight

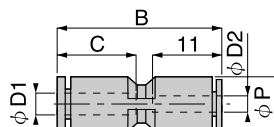


Unit : inch

Model	Tube dia. φD(mm)	B	φP	C	Weight (OZ)	Orifice φMM	Eff.a. mm2	CV
PU 3M	3	0.77	0.24	0.37	0.05	2.00	2.70	0.15
PU 4M	4	0.89	0.31	0.43	0.07	3.00	5.40	0.29
PU 6M	6	0.96	0.41	0.45	0.14	4.00	11.00	0.60
PU 1/8M	1/8	0.89	0.31	0.43	0.07	3.00	2.60	0.14
PU 5/32M	5/32	0.93	0.31	0.43	0.07	2.50	5.40	0.29



Different Diam. Union Straight

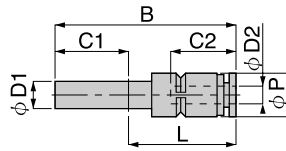


Unit : inch

Model	Tube dia. φD1(mm)	Tube dia. φD2(mm)	B	φP	C1	C2	Weight (OZ)	Orifice φMM	Eff.a. mm2	CV
PG 4-3M	4	3	0.89	0.31	0.43	0.43	0.11	2.00	2.40	0.13
PG 6-4M	6	4	0.94	0.41	0.45	0.43	0.14	3.00	5.60	0.30
PG 4-1/8M	4	1/8	0.89	0.31	0.43	0.43	0.11	2.50	2.40	0.13
PG 6-1/8M	6	1/8	0.94	0.41	0.45	0.43	0.11	3.00	2.60	0.14
PG 5/32-1/8M	5/32	1/8	0.93	0.31	0.43	0.43	0.07	2.50	2.40	0.13

PGJ
MINI TYPE

Reducer

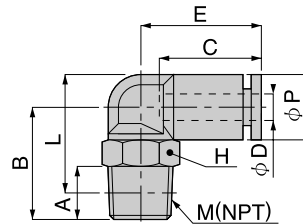


Unit : inch

Model	Tube dia. φD1(mm)	Tube dia. φD2(mm)	B	φP	C1	C2	Weight (OZ)	Orifice φMM	Eff.a. mm2	CV
PGJ 4-3M	4	3	1.32	0.31	0.43	0.37	0.05	2.50	3.70	0.20
PGJ 6-3M	6	3	1.50	0.37	0.45	0.43	0.09	2.50	3.10	0.17
PGJ 6-4M	6	4	1.50	0.37	0.45	0.43	0.12	3.00	5.40	0.29
PGJ 6-1/8M	6	1/8	1.50	0.39	0.45	0.43	0.09	3.00	2.50	0.14

PL
MINI TYPE

Elbow



Unit : inch

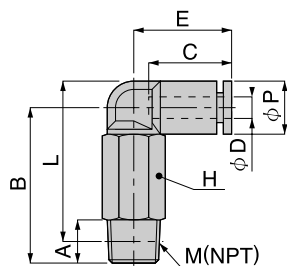
Model	Tube dia. φD(mm)	M	A	B	L	φP	C	E	H	Weight (OZ)	Orifice φMM	Eff.a. mm2	CV
PL 3-M3M	3	M3	0.12	0.47	0.35	0.26	0.37	0.43	0.22	0.05	1.20	0.50	0.03
PL 3-M5M	3	M5	0.14	0.53	0.39	0.26	0.37	0.43	0.31	0.11	1.20	0.90	0.05
PL 3-M6M	3	M6	0.18	0.57	0.39	0.26	0.37	0.43	0.31	0.11	1.20	0.90	0.05
PL 4-M3M	4	M3	0.12	0.55	0.43	0.33	0.43	0.59	0.31	0.11	1.30	1.30	0.07
PL 4-M5M	4	M5	0.14	0.53	0.39	0.33	0.43	0.59	0.31	0.11	2.40	2.20	0.12
PL 4-M6M	4	M6	0.18	0.57	0.39	0.33	0.43	0.59	0.31	0.14	2.50	3.90	0.21
PL 4-01M	4	R1/8	0.31	0.63	0.47	0.33	0.43	0.61	0.39	0.21	3.00	4.80	0.26
PL 6-M5M	6	M5	0.14	0.57	0.43	0.43	0.45	0.63	0.31	0.14	2.40	3.50	0.19
PL 6-M6M	6	M6	0.18	0.61	0.43	0.43	0.45	0.63	0.31	0.14	2.50	3.60	0.20
PL 6-01M	6	R1/8	0.31	0.67	0.51	0.43	0.45	0.63	0.39	0.25	4.00	8.50	0.46
PL 1/8-M3M	1/8	M3	0.12	0.55	0.43	0.33	0.43	0.59	0.31	0.11	1.30	0.90	0.05
PL 1/8-M5M	1/8	M5	0.14	0.53	0.39	0.33	0.43	0.59	0.31	0.11	2.40	2.70	0.15
PL 1/8-M6M	1/8	M6	0.18	0.57	0.39	0.33	0.43	0.59	0.31	0.14	2.50	2.50	0.14
PL 1/8-01M	1/8	R1/8	0.31	0.63	0.47	0.33	0.43	0.61	0.39	0.21	3.00	2.00	0.11

Unit : inch

Model	Tube dia. φD	NPT	A	B	L	φP	C	E	H	Weight (OZ)	Orifice φMM	Eff.a. mm2	CV
PL 1/8-U10MU	1/8	10-32UNF	0.14	0.53	0.39	0.31	0.43	0.61	5/16	0.12	2.40	2.70	0.15
PL 1/8-N0MU	1/8	1/16-27	0.31	0.73	0.57	0.31	0.43	0.63	7/16	0.26	2.50	2.00	0.11
PL 1/8-N1MU	1/8	1/8	0.31	0.63	0.47	0.31	0.43	0.63	7/16	0.25	2.50	2.00	0.11
PL 5/32-U10MU	5/32	10-32UNF	0.14	0.53	0.39	0.31	0.43	0.61	5/16	0.12	2.40	2.20	0.12
PL 5/32-N0MU	5/32	1/16-27	0.31	0.73	0.57	0.31	0.43	0.63	7/16	0.26	2.50	4.80	0.26
PL 5/32-N1MU	5/32	1/8	0.31	0.63	0.47	0.31	0.43	0.63	7/16	0.25	2.50	4.80	0.26



Long Elbow



Unit : inch

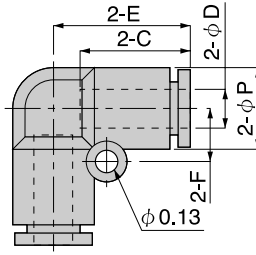
Model	Tube dia. ΦD(mm)	M	A	B	L	ΦP	C	E	H	Weight (OZ)	Orifice ΦMM	Eff.a. mm ²	CV
PLL 3-M3M	3	M3	0.12	0.75	0.63	0.24	0.37	0.43	0.22	0.09	1.20	0.60	0.03
PLL 4-M3M	4	M3	0.12	0.91	0.79	0.33	0.43	0.59	0.31	0.25	1.20	0.90	0.05
PLL 4-M5M	4	M5	0.14	0.98	0.85	0.33	0.43	0.59	0.31	0.30	2.40	3.00	0.16
PLL 4-M6M	4	M6	0.18	1.02	0.85	0.33	0.43	0.59	0.31	0.30	2.50	3.70	0.20
PLL 4-01M	4	R1/8	0.31	1.12	0.87	0.33	0.43	0.59	0.39	0.46	4.00	4.20	0.23
PLL 6-M5M	6	M5	0.14	1.02	0.89	0.43	0.45	0.63	0.31	0.32	2.40	3.30	0.18
PLL 6-M6M	6	M6	0.18	1.06	0.89	0.43	0.45	0.63	0.31	0.32	2.50	3.70	0.20
PLL 6-01M	6	R1/8	0.31	1.16	1.00	0.43	0.45	0.63	0.39	0.49	4.00	7.60	0.41
PLL 1/8-M3M	1/8	M3	0.12	0.91	0.79	0.33	0.43	0.59	0.31	0.25	1.20	0.90	0.05
PLL 1/8-M5M	1/8	M5	0.14	0.98	0.85	0.33	0.43	0.59	0.31	0.30	2.40	2.50	0.14

Unit : inch

Model	Tube dia. ΦD	NPT	A	B	L	ΦP	C	E	H	Weight (OZ)	Orifice ΦMM	Eff.a. mm ²	CV
PLL 1/8-U10MU	1/8	10-32UNF	0.14	0.98	0.85	0.31	0.43	0.61	5/16	0.28	2.40	2.50	0.14
PLL 1/8-N1MU	1/8	1/8	0.31	1.12	0.96	0.31	0.43	0.61	7/16	0.56	2.50	4.20	0.23
PLL 5/32-U10MU	5/32	10-32UNF	0.14	0.98	0.85	0.31	0.43	0.61	5/16	0.28	2.50	3.00	0.16
PLL 5/32-N1MU	5/32	1/8	0.31	1.12	0.96	0.31	0.43	0.61	7/16	0.56	2.50	4.20	0.23

PV
MINI TYPE

Union Elbow

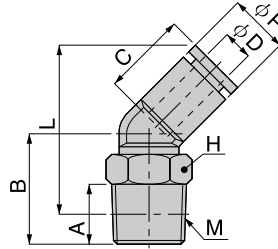


Unit : inch

Model	Tube dia. φD(mm)	φP	C	E	F	Weight (OZ)	Orifice φMM	Eff.a. mm2	CV
PV 3M	3	0.24	0.37	0.43	0.18	0.05	2.00	2.30	0.12
PV 4M	4	0.31	0.43	0.51	0.22	0.07	3.00	4.80	0.26
PV 6M	6	0.41	0.45	0.59	0.26	0.14	4.00	9.00	0.49
PV 1/8M	1/8	0.31	0.43	0.51	0.22	0.07	3.00	2.10	0.11
PV 5/32M	5/32	0.31	0.43	0.53	0.22	0.08	2.50	4.80	0.26

PLH
MINI TYPE

45-degree Elbow

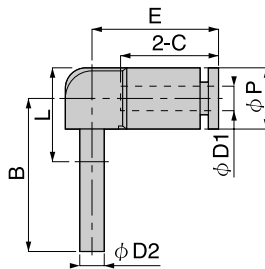


Unit : inch

Model	Tube dia. φD(mm)	M	A	B	L	φP	C	H	Weight (OZ)	Orifice φMM	Eff.a. mm2	CV
PLH 4-M5M	4	M5	0.14	0.49	0.35	0.31	0.43	0.31	0.11	2.40	2.90	0.16
PLH 4-M6M	4	M6	0.18	0.53	0.35	0.31	0.43	0.31	0.12	2.50	4.00	0.22
PLH 4-01M	4	R1/8	0.31	0.59	0.43	0.31	0.43	0.39	0.21	3.00	5.00	0.27
PLH 6-M5M	6	M5	0.14	0.55	0.41	0.41	0.45	0.31	0.14	2.40	3.60	0.20
PLH 6-M6M	6	M6	0.18	0.59	0.41	0.41	0.45	0.31	0.14	2.50	3.80	0.21
PLH 6-01M	6	R1/8	0.31	0.65	0.49	0.41	0.45	0.39	0.23	4.00	8.70	0.47

PLJ
MINI TYPE

Socket Elbow



Unit : inch

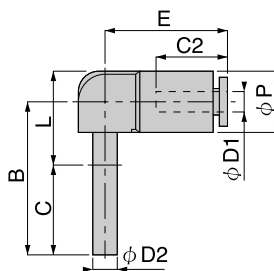
Model	Tube dia. φD1(mm)	Tube dia. φD2(mm)	B	φP	C1	C2	E	Weight (OZ)	Orifice φMM	Eff.a. mm2	CV
PLJ 3M	3	3	0.83	0.28	0.37	0.37	0.51	0.04	1.50	1.20	0.07
PLJ 4M	4	4	0.98	0.31	0.43	0.43	0.59	0.07	2.50	3.20	0.17
PLJ 6M	6	6	1.16	0.41	0.45	0.45	0.65	0.11	3.00	5.10	0.28

Unit : inch

Model	Tube dia. φD1	Tube dia. φD2	B	φP	C1	C2	E	Weight (OZ)	Orifice φMM	Eff.a. mm2	CV
PLJ 1/8M	1/8	1/8	0.59	0.31	0.43	0.43	0.98	0.06	1.50	3.20	0.17
PLJ 5/32M	5/32	5/32	0.59	0.31	0.43	0.43	0.98	0.06	2.50	3.20	0.17

PLGJ
MINI TYPE

Different Diam. Socket Elbow

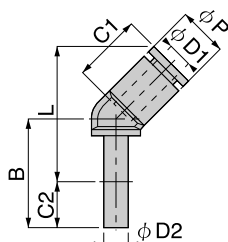


Unit : inch

Model	Tube dia. φD1 (mm)	Tube dia. φD2 (mm)	B	ΦP	C1	C2	E	Weight (OZ)	Orifice φMM	Eff.a. mm2	CV
PLGJ 4-3M	3	4	0.98	0.33	0.43	0.43	0.59	0.07	2.50	2.30	0.12
PLGJ 6-3M	3	6	1.16	0.41	0.43	0.45	0.63	0.11	2.50	2.40	0.13
PLGJ 6-4M	4	6	1.16	0.41	0.43	0.45	0.63	0.11	3.00	4.20	0.23
PLGJ 4-1/8M	1/8	4	0.98	0.33	0.43	0.43	0.59	0.07	2.50	2.30	0.12
PLGJ 6-1/8M	1/8	6	1.16	0.41	0.43	0.45	0.63	0.11	3.00	4.20	0.23
PLGJ 5/32-1/8M	5/32	1/8	0.59	0.33	0.43	0.43	0.98	0.06	2.50	2.30	0.12

PLHJ
MINI TYPE

45-degree Socket Elbow

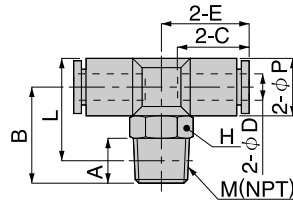


Unit : inch

Model	Tube dia. φD1 (mm)	Tube dia. φD2 (mm)	B	ΦP	C1	C2	Weight (OZ)	Orifice φMM	Eff.a. mm2	CV
PLHJ 4M	4	4	1.00	0.31	0.43	0.43	0.07	2.50	3.20	0.17
PLHJ 6M	6	6	1.14	0.41	0.45	0.45	0.11	4.00	5.10	0.28

PB
MINI TYPE

Tee



Unit : inch

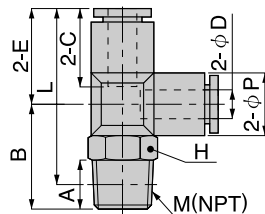
Model	Tube dia. φD(mm)	M	A	B	L	φP	C	E	H	Weight (OZ)	Orifice φMM	Eff.a. mm2	CV
PB 3-M3M	3	M3	0.12	0.47	0.35	0.26	0.37	0.43	0.22	0.07	1.20	0.70	0.04
PB 3-M5M	3	M5	0.14	0.53	0.39	0.26	0.37	0.43	0.31	0.16	1.20	2.20	0.12
PB 3-M6M	3	M6	0.18	0.57	0.39	0.26	0.37	0.43	0.31	0.16	1.20	2.00	0.11
PB 4-M3M	4	M3	0.12	0.59	0.47	0.33	0.43	0.53	0.31	0.14	1.20	0.90	0.05
PB 4-M5M	4	M5	0.14	0.57	0.43	0.33	0.43	0.51	0.31	0.18	2.40	2.10	0.11
PB 4-M6M	4	M6	0.18	0.61	0.43	0.33	0.43	0.51	0.31	0.18	2.50	2.20	0.12
PB 4-01M	4	R1/8	0.31	0.67	0.51	0.33	0.43	0.51	0.39	0.25	3.00	4.50	0.24
PB 6-M5M	6	M5	0.14	0.61	0.47	0.43	0.45	0.59	0.31	0.21	2.40	2.20	0.12
PB 6-M6M	6	M6	0.18	0.65	0.47	0.43	0.45	0.59	0.31	0.21	2.50	3.30	0.18
PB 6-01M	6	R1/8	0.31	0.71	0.55	0.43	0.45	0.59	0.39	0.30	3.00	8.90	0.48
PB 1/8-M3M	1/8	M3	0.12	0.59	0.47	0.33	0.43	0.53	0.31	0.14	1.20	0.90	0.05
PB 1/8-M5M	1/8	M5	0.14	0.57	0.43	0.33	0.43	0.51	0.31	0.18	2.40	2.40	0.13
PB 1/8-M6M	1/8	M6	0.18	0.61	0.43	0.33	0.43	0.51	0.31	0.18	2.50	2.00	0.11
PB 1/8-01M	1/8	R1/8	0.31	0.67	0.51	0.33	0.43	0.51	0.39	0.26	3.00	2.50	0.14

Unit : inch

Model	Tube dia. φD	NPT	A	B	L	φP	C	E	H	Weight (OZ)	Orifice φMM	Eff.a. mm2	CV
PB 1/8-U10MU	1/8	10-32UNF	0.14	0.57	0.43	0.31	0.43	0.53	5/16	0.15	2.40	2.10	0.11
PB 1/8-N1MU	1/8	1/8	0.31	0.67	0.51	0.31	0.43	0.53	7/16	0.29	2.50	2.30	0.12
PB 5/32-U10MU	5/32	10-32UNF	0.14	0.57	0.43	0.31	0.43	0.53	5/16	0.15	2.40	3.70	0.20
PB 5/32-N1MU	5/32	1/8	0.31	0.67	0.51	0.31	0.43	0.53	7/16	0.28	2.50	4.60	0.25

PD
MINI TYPE

Branch Tee



Unit : inch

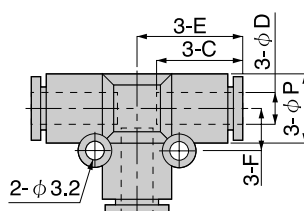
Model	Tube dia. φD(mm)	M	A	B	L	φP	C	E	H	Weight (OZ)	Orifice φMM	Eff.a. mm2	CV
PD 3-M3M	3	M3	0.12	0.47	0.35	0.26	0.37	0.43	0.22	0.02	1.20	0.70	0.04
PD 3-M5M	3	M5	0.14	0.53	0.39	0.26	0.37	0.43	0.31	0.02	1.20	2.20	0.12
PD 3-M6M	3	M6	0.18	0.57	0.39	0.26	0.37	0.43	0.31	0.02	1.20	2.00	0.11
PD 4-M3M	4	M3	0.12	0.59	0.47	0.33	0.43	0.53	0.31	0.02	1.20	0.90	0.05
PD 4-M5M	4	M5	0.14	0.57	0.43	0.33	0.43	0.51	0.31	0.02	2.40	2.10	0.11
PD 4-M6M	4	M6	0.18	0.61	0.43	0.33	0.43	0.51	0.31	0.02	2.50	2.20	0.12
PD 4-01M	4	R1/8	0.31	0.67	0.51	0.33	0.43	0.51	0.39	0.02	3.00	4.50	0.24
PD 6-M5M	6	M5	0.14	0.61	0.47	0.43	0.45	0.59	0.31	0.02	2.40	2.20	0.12
PD 6-M6M	6	M6	0.18	0.65	0.47	0.43	0.45	0.59	0.31	0.02	2.50	3.30	0.18
PD 6-01M	6	R1/8	0.31	0.71	0.55	0.43	0.45	0.59	0.39	0.02	3.00	8.90	0.48
PD 1/8-M3M	1/8	M3	0.12	0.59	0.47	0.33	0.43	0.53	0.31	0.02	1.20	0.90	0.05
PD 1/8-M5M	1/8	M5	0.14	0.57	0.43	0.33	0.43	0.51	0.31	0.02	2.40	2.40	0.13
PD 1/8-M6M	1/8	M6	0.18	0.61	0.43	0.33	0.43	0.51	0.31	0.02	2.50	2.00	0.11
PD 1/8-01M	1/8	R1/8	0.31	0.67	0.51	0.33	0.43	0.51	0.39	0.02	3.00	2.50	0.14

Unit : inch

Model	Tube dia. φD	NPT	A	B	L	φP	C	E	H	Weight (OZ)	Orifice φMM	Eff.a. mm2	CV
PD 1/8-U10MU	1/8	10-32UNF	0.14	0.57	0.43	0.31	0.43	0.51	5/16	0.15	2.40	2.40	0.13
PD 1/8-N1MU	1/8	1/8	0.31	0.67	0.51	0.31	0.43	0.51	7/16	0.29	2.50	2.50	0.14
PD 5/32-U10MU	5/32	10-32UNF	0.14	0.57	0.43	0.31	0.43	0.51	5/16	0.15	2.40	2.10	0.11
PD 5/32-N1MU	5/32	1/8	0.31	0.67	0.51	0.31	0.43	0.51	7/16	0.28	2.50	4.50	0.24

PE
MINI TYPE

Union Tee

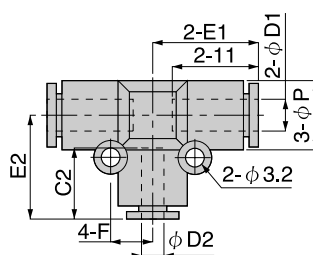


Unit : inch

Model	Tube dia. φD(mm)	ΦP	C	E	F	Weight (OZ)	Orifice φMM	Eff.a. mm2	CV
PE 3M	3	0.24	0.37	0.43	0.18	0.07	2.00	1.90	0.10
PE 4M	4	0.31	0.43	0.51	0.22	0.07	3.00	4.60	0.25
PE 6M	6	0.41	0.45	0.59	0.26	0.14	4.00	8.90	0.48
PE1/8M	1/8	0.31	0.43	0.51	0.22	0.07	3.00	2.10	0.11
PE 5/32M	5/32	0.31	0.43	0.53	0.22	0.12	2.50	4.60	0.25

PEG
MINI TYPE

Different Diam. Union Tee

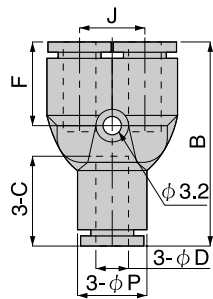


Unit : inch

Model	Tube dia. φD1(mm)	Tube dia. φD2(mm)	ΦP	C1	C2	E1	E2	F	Weight (OZ)	Orifice φMM	Eff.a. mm2	CV
PEG 4-3M	4	3	0.31	0.43	0.43	0.51	0.51	0.22	0.12	2.50	2.40	0.13
PEG 6-4M	6	4	0.41	0.45	0.43	0.59	0.57	0.26	0.14	3.00	5.30	0.29
PEG 4-1/8M	4	1/8	0.31	0.43	0.43	0.51	0.51	0.22	0.12	2.50	2.30	0.12
PEG 5/32-1/8M	5/32	1/8	0.31	0.43	0.43	0.51	0.51	0.11	0.12	2.50	2.30	0.12



Union Y

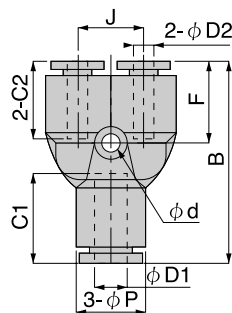


Unit : inch

Model	Tube dia. φD(mm)	B	φP	C	J	F	Weight (OZ)	Orifice φMM	Eff.a. mm2	CV
PY 3M	3	1.10	0.31	0.37	0.31	0.51	0.11	2.00	2.00	0.11
PY 4M	4	1.08	0.31	0.43	0.31	0.49	0.11	2.00	2.30	0.12
PY 6M	6	1.22	0.41	0.45	0.41	0.55	0.19	3.00	6.80	0.37
PY1/8M	1/8	1.08	0.31	0.43	0.31	0.49	0.11	2.50	1.10	0.06
PY 5/32M	5/32	1.14	0.31	0.43	0.31	0.51	0.12	3.00	2.30	0.12



Different Diam. Union Y

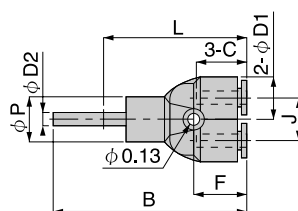


Unit : inch

Model	Tube dia. φD1(mm)	Tube dia. φD2(mm)	B	φP	C1	C2	J	F	Weight (OZ)	Orifice φMM	Eff.a. mm2	CV
PW 4-3M	4	3	1.08	0.31	0.43	0.37	0.31	0.49	0.11	1.50	2.10	0.11
PW 6-3M	6	3	1.20	0.41	0.45	0.43	0.41	0.53	0.19	2.50	2.50	0.14
PW 6-4M	6	4	1.20	0.41	0.45	0.43	0.41	0.53	0.18	3.00	6.20	0.34
PW 1/8-3M	1/8	3	1.08	0.31	0.43	0.37	0.31	0.49	0.11	1.50	1.70	0.09
PW 4-1/8M	4	1/8	1.08	0.31	0.43	0.43	0.31	0.49	0.11	2.50	1.80	0.10
PW 6-1/8M	6	1/8	1.20	0.41	0.45	0.43	0.41	0.53	0.18	3.00	2.40	0.13
PW 5/32-1/8M	5/32	1/8	1.14	0.31	0.43	0.43	0.31	0.51	0.12	3.00	1.80	0.10

PYJ
MINI TYPE

Branch Union Y

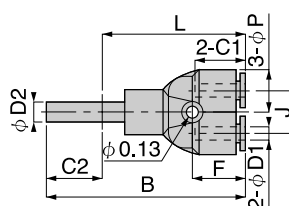


Unit : inch

Model	Tube dia. φ D1 (mm)	Tube dia. φ D2 (mm)	B	φ P	C1	C2	J	F	Weight (OZ)	Orifice φ MM	Eff.a. mm ²	CV
PYJ 3M	3	3	1.71	0.31	0.37	0.37	0.31	0.51	0.11	1.50	0.80	0.04
PYJ 3M	4	4	1.77	0.31	0.43	0.43	0.31	0.49	0.12	2.00	2.20	0.12
PYJ 4M	6	6	1.99	0.41	0.45	0.45	0.41	0.55	0.19	3.00	5.60	0.30
PYJ 5/32M	5/32	5/32	1.77	0.31	0.43	0.43	0.31	0.51	0.11	2.50	2.20	0.12

PWJ
MINI TYPE

Different Diam.Branch Union Y

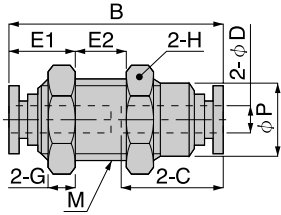


Unit : inch

Model	Tube dia. φ D1 (mm)	Tube dia. φ D2 (mm)	B	φ P	C1	C2	J	F	Weight (OZ)	Orifice φ MM	Eff.a. mm ²	CV
PWJ 4-3M	4	3	1.73	0.31	0.43	0.37	0.31	0.49	0.11	2.50	2.60	0.14
PWJ 6-3M	6	3	1.97	0.41	0.45	0.43	0.41	0.53	0.18	2.50	4.50	0.24
PWJ 6-4M	6	4	1.97	0.41	0.45	0.43	0.41	0.53	0.18	3.00	5.30	0.29
PWJ 4-1/8M	4	1/8	1.73	0.31	0.43	0.43	0.31	0.49	0.11	2.50	1.70	0.09
PWJ 6-1/8M	6	1/8	1.97	0.41	0.45	0.43	0.41	0.53	0.18	3.00	2.30	0.12



Bulkhead Union



Unit : inch

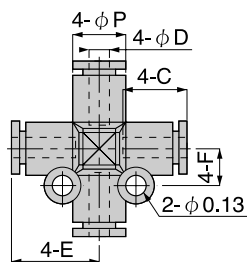
Model	Tube dia. φD(mm)	M	B	φP	C	E1	E2	H	Weight (OZ)	Orifice φMM	Eff.a. mm2	CV
PM 3M	3	M8	0.75	0.28	0.37	0.28	0.30	0.39	0.11	2.00	2.40	0.13
PM 4M	4	M10	0.91	0.35	0.43	0.35	0.30	0.47	0.21	3.00	3.70	0.20
PM 6M	6	M12	0.96	0.43	0.45	0.41	0.24	0.55	0.32	4.00	10.50	0.57

Unit : inch

Model	Tube dia. φD	UNF	B	φP	C1	E1	E2	H	Weight (OZ)	Orifice φMM	Eff.a. mm2	CV
PM 1/8MU	1/8	7/16-20	0.91	0.35	0.43	0.35	0.30	1/2	0.23	3.00	3.70	0.20
PM 5/32MU	5/32	7/16-20	0.91	0.35	0.43	0.35	0.30	1/2	0.23	3.00	3.70	0.20

PZA
MINI TYPE

Cross A

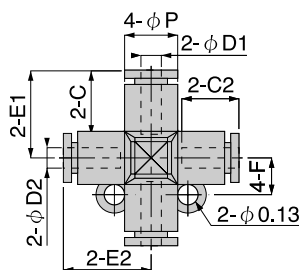


Unit : inch

Model	Tube dia. φD(mm)	φP	C	E	Weight (OZ)	Orifice φMM	Eff.a. mm2	CV
PZA 3M	3	0.31	0.43	0.51	0.14	2.00	2.20	0.12
PZA 4M	4	0.31	0.43	0.53	0.14	3.00	4.80	0.26
PZA 6M	6	0.41	0.45	0.59	0.18	4.00	8.80	0.48
PZA1/8M	1/8	0.31	0.43	0.51	0.14	3.00	4.80	0.26
PZA 5/32M	5/32	0.31	0.43	0.53	0.15	3.00	4.80	0.26

PZB
MINI TYPE

Cross B

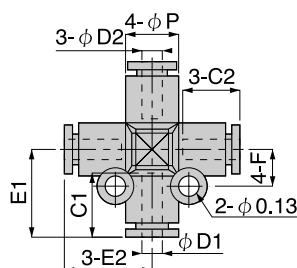


Unit : inch

Model	Tube dia. φD1(mm)	Tube dia. φD2(mm)	φP	C1	C2	E1	E2	F	Weight (OZ)	Orifice φMM	Eff.a. mm2	CV
PZB 4-3M	4	3	0.31	0.43	0.43	0.51	0.51	0.22	0.14	2.00	2.20	0.12
PZB 6-4M	6	4	0.41	0.45	0.43	0.59	0.57	0.26	0.23	3.00	5.30	0.29
PZB 1/8-3M	1/8	3	0.31	0.43	0.43	0.51	0.51	0.22	0.16	2.00	2.20	0.12
PZB 4-1/8M	4	1/8	0.31	0.43	0.43	0.51	0.51	0.22	0.14	3.00	4.80	0.26
PZB 6-1/8M	6	1/8	0.41	0.45	0.43	0.59	0.57	0.26	0.23	3.00	5.30	0.29

PZC
MINI TYPE

Cross C

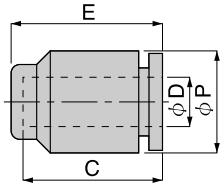


Unit : inch

Model	Tube dia. φD1(mm)	Tube dia. φD2(mm)	φP	C1	C2	E1	E2	F	Weight (OZ)	Orifice φMM	Eff.a. mm2	CV
PZC 4-3M	4	3	0.31	0.43	0.43	0.51	0.51	0.22	0.14	2.00	2.00	0.11
PZC 6-4M	6	4	0.41	0.45	0.43	0.59	0.57	0.26	0.23	3.00	4.90	0.27
PZC 1/8-3M	1/8	3	0.31	0.43	0.43	0.51	0.51	0.22	0.16	2.00	1.90	0.10
PZC 4-1/8M	4	1/8	0.31	0.43	0.43	0.51	0.51	0.22	0.16	3.00	2.40	0.13
PZC 6-1/8M	6	1/8	0.41	0.45	0.43	0.59	0.57	0.26	0.23	3.00	2.40	0.13

PPF
MINI TYPE

Cap



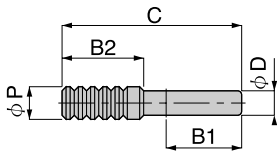
Unit : inch

Model	Tube dia. ϕD (mm)	ϕP	C	E	Weight (OZ)
PPF 3M	3	0.41	0.24	0.37	0.02



PP
MINI TYPE

Plug



Unit : Inch

Model	Tube dia. ϕD (mm)	B1	B2	ϕP	C	Weight (OZ)
PP 3M	3	0.37	0.39	0.16	0.87	0.02



Unit : inch

Model	Tube dia. ϕD	B1	B2	ϕP	C	Weight (OZ)
PP 1/8M	0.12	0.37	0.39	0.16	0.87	0.01