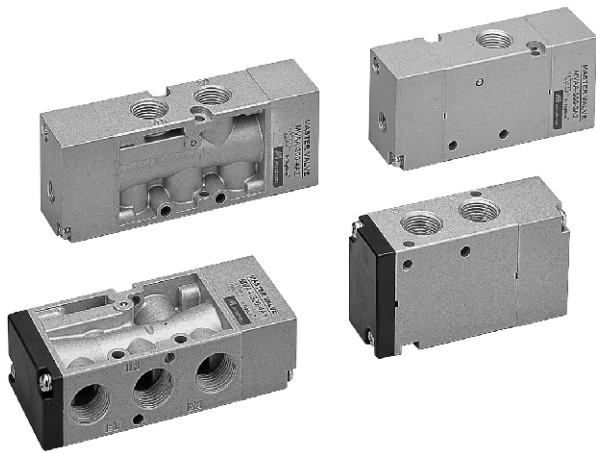


# MVAA-300 系列

氣動閥



規格：

型號	MVAA-300-3A1,A2	MVAA-300-4A1,A2
配管口徑代號	10A	
配管口徑尺寸	PT 3/8	
方口數	3口	5口
使用流體	空氣	
使用壓力範圍	0~8 kgf/cm <sup>2</sup>	
耐壓力	10 kgf/cm <sup>2</sup>	
有效斷面積	35 mm <sup>2</sup>	
導引壓力範圍	2~7 kgf/cm <sup>2</sup>	
周圍溫度	-5~+60°C (不凍結)	
重量	295 g	324 g
	324 g	236 g
		301 g

訂購代號：

MVAA - 300 - 4A2 - NC - BSP

型號

本體寬度

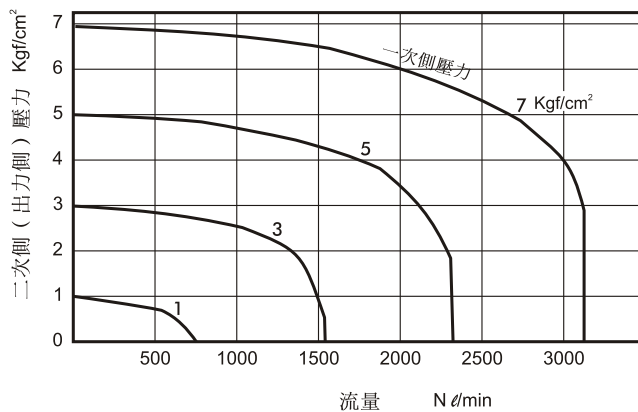
3 : 3方向  
4 : 4方向

NC : 常閉型  
NO : 常開型  
(僅適用3A1)

A1 : 單動氣壓導引  
A2 : 複動氣壓導引

配管口螺牙  
無 : PT牙  
BSP : BSP牙  
NPT : NPT牙

流量特性圖：



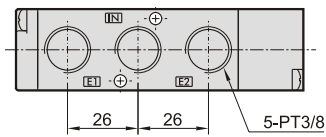
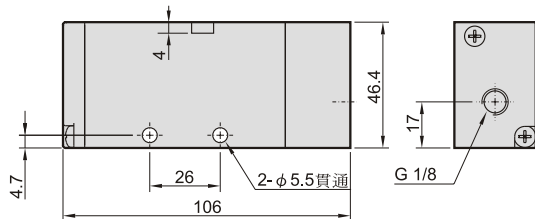
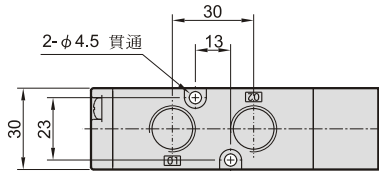
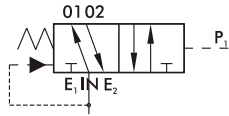
# MVAA-300

氣動閥

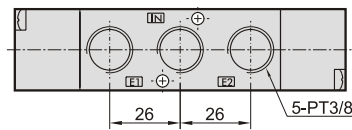
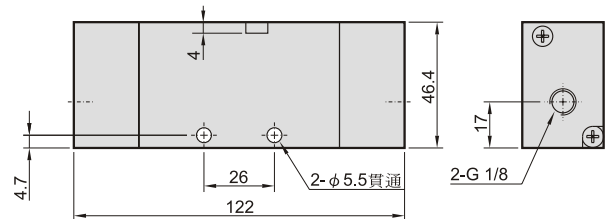
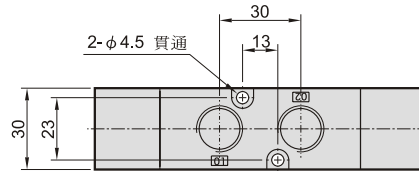


外觀尺寸說明：

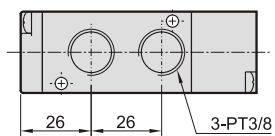
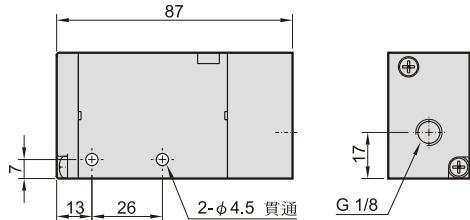
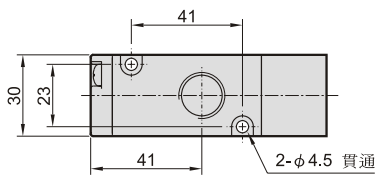
**MVAA-300-4A1**



**MVAA-300-4A2**



**MVAA-300-3A1-NC**



**MVAA-300-3A2**

