

MSLE series

PLASTIC SILENCER



Order example:

MSLE — 01 — 70

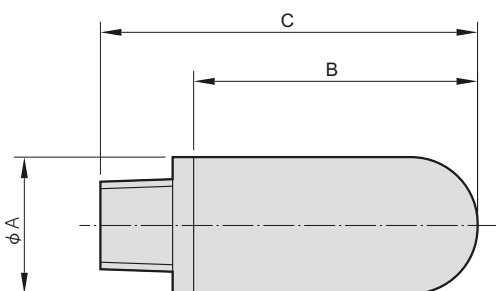
MODEL

PORT SIZE

PORE SIZE

- 01 : PT 1/8
- 02 : PT 1/4
- 03 : PT 3/8
- 04 : PT 1/2
- 06 : PT 3/4
- 06D:PT 3/4
- 08 : PT 1

70 : 70 μ



Features:

- The Dragon Shing silencer is a porous polyethylene body moulded to a polyethylene (PE) adapter.
- With various adapters, the silencer can be screwed directly into the exhaust port of a control valve.
- The noise reduced as the exhausting air escapes to the atmosphere by expending through omni directional paths of the porous body.

■ Significant noise reduction & high air flow

With double layer design, significant noise reduction and high air flow can be achieved at the same time.

■ Easy installation

With different adapter, silencers screw directly to the exhaust port.

■ High working pressures

Working pressures up to 10.0 kg/cm².

■ Chemical resistance

High chemical resistance & Rust free.

■ Maintenance free

Oil and water are not able to affect polyethylene silencers.

Specification:

Medium	Air
Operating pressure range	10.0 kgf/cm ²
Ambient temperature	0~+60℃

Model	Code Port size	A	B	C
MSLE-01	PT 1/8	15.6	27.3	37.3
MSLE-02	PT 1/4	19	30.5	43.3
MSLE-03	PT 3/8	25	53	69
MSLE-04	PT 1/2	25	62.5	78.5
MSLE-06	PT 3/4	38	108.4	132.4
MSLE-06D	PT 3/4	50	107	127
MSLE-08	PT 1	50	107	139

- MSLE-04-70 means a PT 1/2 silencer with 70 μ porous body.
- MSLE-06D-70 means a PT 3/4 double layer silencer with 70 μ porous body.
- Port size out of specification is also available.