

Ultra-small Barb Joint for Pneumatic Piping

Minimal Fitting

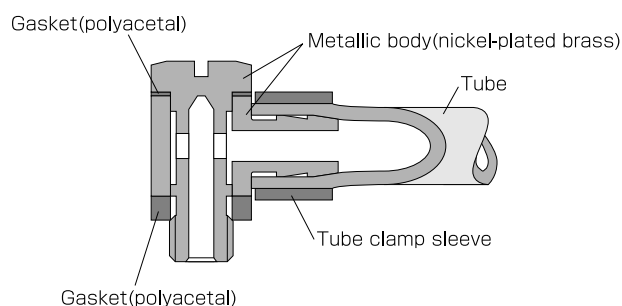
Package 10 pcs. in a bag

- The Minimal Joint models are ultra-small barb joints for pneumatic piping.
- They are optimal for piping vacuum equipment.(Use with vacuum tubes.)
- They prove most effective in piping with small equipment or space-saving piping.

Specifications

Fluid admitted	Air	
Service pressure range	0~0.5MPa(with vacuum tube 0~0.3MPa) 0~72psi(with vacuum tube 0~43psi)	
Working vacuum	-27.6in.Hg	-700mmHg(60Torr)
Service temperature range	32~122°F	0~50°C

Construction



Model Designation(Example)



①Type

②Tube Dia.(φD)

Code	0320	0425	0535	0640	5/32	5/32
OD	Φ3mm	Φ4mm	Φ5mm	Φ6mm	Φ5/32inch	Φ1/4inch
ID	Φ2mm	Φ2.5mm	Φ3.5mm	Φ4mm	Φ0.1inch	Φ0.18inch

Thread size (FM)

Code	FM5
Size	M5×0.8 female thread

③Installation thread size(M)

Code	FM5	FM6	U10U
Size	M5×0.8 female thread	M6×1.0 male thread	10-32UNF

④U:Hexagon flat-to-flat inch spec.(NPT)

No code:Hexagon flat-to-flat metric spec.

Detailed Safety Instructions

Before using the PISCO device, be sure to read the "Safety Instructions", "Common Safety Instructions for Products Listed in This Manual" on page 3 and "Common Safety Instructions for Quick-Fitting Joint" on pages 4 and 5.

⚠ Warning

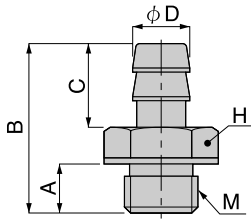
1. Insert the tube completely to the end of barb. Incomplete insertion may result in the coming off of the tube or leakage.
2. When you use an ultrasoft tube, fit a tube clamp sleeve (LS) on the connecting end of the tube. Otherwise the tube may come off, thus causing leaks.

LC
MINI TYPE

Minimal Straight



Unit : inch



Model	ΦD	M	A	B	C	H	Weight (OZ)	Orifice φMM	Eff.a. mm2	CV
LC-0320-M3	0.08	M3	0.10	0.43	0.24	0.22				
LC-0320-M5	0.08	M5	0.12	0.45	0.24	0.28	0.05	1.20	1.70	0.09
LC-0425-M3	0.10	M3	0.10	0.47	0.28	0.22				
LC-0425-M5	0.10	M5	0.12	0.51	0.28	0.28	0.05	1.60	1.70	0.09
LC-0425-M6	0.10	M6	0.16	0.55	0.28	0.31	0.09	1.60	1.70	0.09
LC-0535-M5	0.14	M5	0.12	0.51	0.28	0.28	0.05	1.80	2.00	0.11
LC-0640-M3	0.16	M3	0.10	0.49	0.28	0.22				
LC-0640-M5	0.16	M5	0.12	0.51	0.28	0.28	0.05	2.40	3.60	0.20
LC-0640-M6	0.16	M6	0.16	0.55	0.28	0.31	0.09	2.40	3.60	0.20

Unit : inch

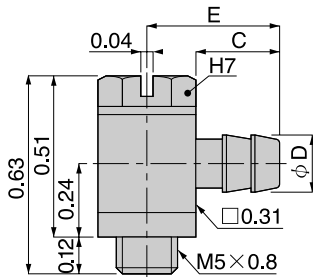
Model	ΦD	M	A	B	C	H	Weight (OZ)	Orifice φMM	Eff.a. mm2	CV
LC-5/32-U10U										
LC-1/4-U10U										

LH
MINI TYPE

Minimal Universal Elbow



Unit : inch



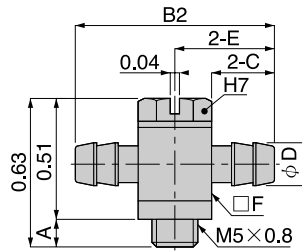
Model	ΦD	M	C	E	Weight (OZ)	Orifice φMM	Eff.a. mm2	CV
LH-0320-M5	0.10	M5	0.24	0.39	0.19	1.20	1.20	0.07
LH-0425-M5	0.12	M5	0.28	0.43	0.19	1.60	1.20	0.07
LH-0640-M5	0.18	M5	0.28	0.43	0.21	2.40	1.50	0.08

LB
MINI TYPE

Minimal Tee



Unit : inch



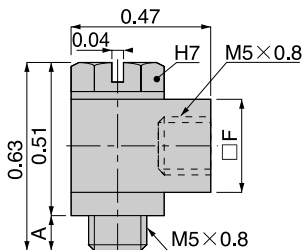
Model	ΦD	M	A	B1	B2	L	C	E	□F	Weight (OZ)	Orifice φMM	Eff.a. mm2	CV
LB-0640-M5	0.18	M5	0.12	0.63	0.87	0.24	0.28	0.43	0.31	0.23	2.00	1.70	0.09

LH
MINI TYPE

Universal Elbow



Unit : inch



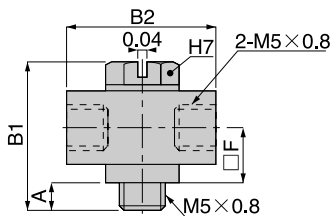
Model	M1	M2	A	B1	B2	L	□F	Weight (OZ)	Orifice φMM
LH-FM5-M5	M5	M5	0.12	0.63	0.47	0.24	0.31	0.23	1.80

LB
MINI TYPE

Universal Tee

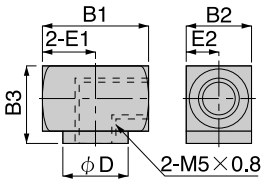


Unit : inch



Model	M	A	B1	B2	L	□F	Weight (OZ)	Orifice φMM
LB-FM5-M5	M5	0.12	0.63	0.63	0.24	0.31	0.26	1.80

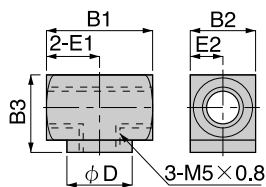
LL Union Elbow



Unit : inch

Model	M	B1	B2	B3	E1	E2	φD	Weight (OZ)
LL-FM5	M5	0.51	0.31	0.37	0.26	0.16	0.31	0.19

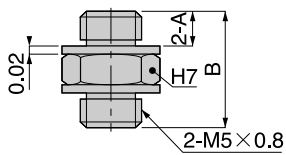
LE Union Tee



Unit : inch

Model	M	B1	B2	B3	E1	E2	φD	Weight (OZ)
LE-FM5	M5	0.51	0.31	0.37	0.26	0.16	0.31	0.19

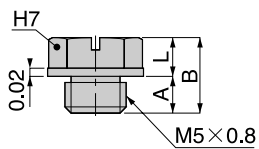
LN Nipple



Unit : inch

Model	A	B	Weight (OZ)	Orifice φMM	Eff.a. mm ²	CV
LN-M5-M5	0.14	0.33	0.1	2.50	2.10	0.11

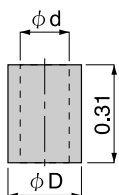
LP Plug



Unit : inch

Model	A	B	L	Weight (OZ)
LP-M5	0.14	0.21	0.10	0.05

LS For Tube Clamp Sleeve



Unit : inch

Model	φD	φd	For Tube (mm)	Weight (OZ)
LS-0425	0.24	0.16	φ4	0.02
LS-0640	0.31	0.24	φ6	0.02

