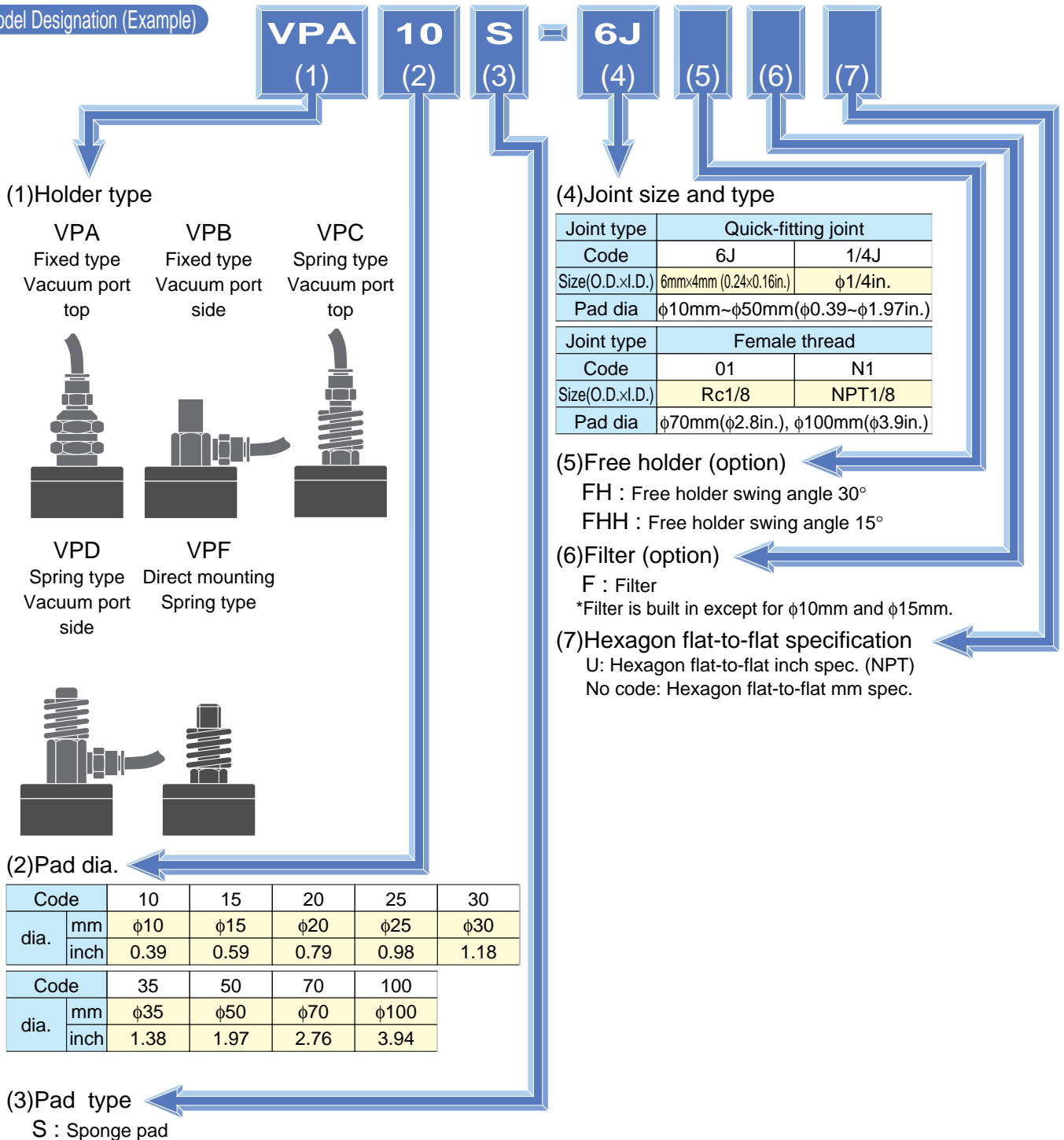


Quick-fitting Type Vacuum Pad Vacuum Pad **Sponge Type**

Features

- The Vacuum Pad Sponge Type is best suited for works with uneven surfaces.
 - ◆ Pad dia : $\phi 10\sim\phi 100\text{mm}(\phi 0.39\sim\phi 3.94\text{in.})$
 - ◆ Holder type : 5 types

Model Designation (Example)

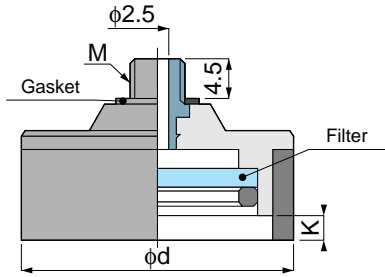


⚠️ Prefailed safety Instructions

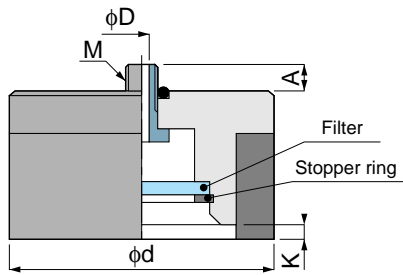
Before using the PISCO device, be sure to read the "Safety Instructions", "Common Safety Instructions for Products Listed in This Manual" on pages 23~24 and "Common Safety Instructions for Vacuum Pads on pages 439~440.

Vacuum Series Vacuum Pad Sponge Type

● Pad Mounting Type



VP 10SA-30SA

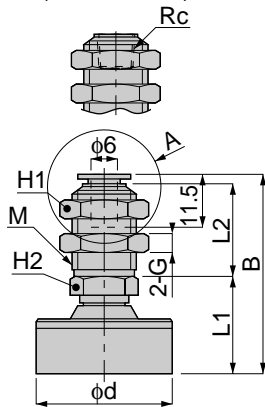


VP 35SA-100SA

unit:mm					
Model	Pad dia. φd	φD	M	A	K
VP 10SA	10	-	M6×1	-	1.5
VP 15SA	15	-	M6×1	-	1.5
VP 20SA	20	-	M6×1	-	3
VP 25SA	25	-	M6×1	-	3
VP 30SA	30	-	M6×1	-	3
VP 35SA	35	3	M6×1	3.5	3
VP 50SA	50	3	M6×1	3.5	3
VP 70SA	70	6	M10×1.5	7.5	3
VP 100SA	100	6	M10×1.5	8	3



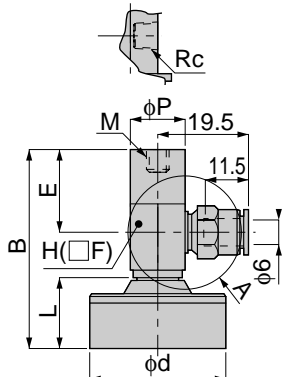
Fixed type
Vacuum Port
top A Details
(VPA 70, 100)



unit:mm										
Model	Pad dia. φd	Rc	M	B	L1	L2	H1	H2	G	Mass (g)
VPA 10S-6J	10	-	M14×1	36.5	14.5	20	17	14	4	31
VPA 15S-6J	15	-	M14×1	36.5	14.5	20	17	14	4	31.5
VPA 20S-6J	20	-	M14×1	42.5	20.5	20	17	14	4	33
VPA 25S-6J	25	-	M14×1	42.5	20.5	20	17	14	4	34.5
VPA 30S-6J	30	-	M14×1	42.5	20.5	20	17	14	4	35.5
VPA 35S-6J	35	-	M14×1	55.5	33.5	20	17	14	4	76
VPA 50S-6J	50	-	M14×1	55.5	33.5	20	17	14	4	137
VPA 70S-01	70	Rc1/8	M20×1	65	40	25	27	22	5	354
VPA 100S-01	100	Rc1/8	M20×1	65	40	25	27	22	5	554



Fixed type
Vacuum Port
side A Details
(VPB 70, 100)



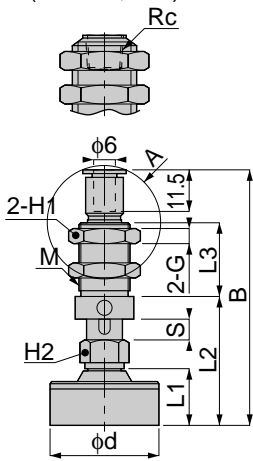
unit:mm										
Model	Pad dia. φd	Rc	M	B	L	φP	E	H	Mass (g)	
VPB 10S-6J	10	-	M6×1	37	9.5	12	18	12	28.5	
VPB 15S-6J	15	-	M6×1	37	9.5	12	18	12	29	
VPB 20S-6J	20	-	M6×1	43	15.5	12	18	12	30.5	
VPB 25S-6J	25	-	M6×1	43	15.5	12	18	12	32	
VPB 30S-6J	30	-	M6×1	43	15.5	12	18	12	33	
VPB 35S-6J	35	-	M6×1	56	28	12	18	12	75	
VPB 50S-6J	50	-	M6×1	56	28	12	18	12	136	
VPB 70S-01	70	Rc1/8	M8×1.25	68	30	17	23	22	361	
VPB 100S-01	100	Rc1/8	M8×1.25	68	30	17	23	22	395	



Vacuum Series Vacuum Pad Sponge Type



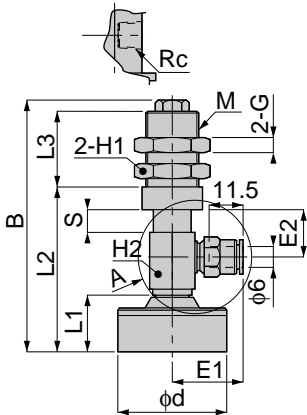
Spring type
Vacuum Port
top A Details
(VPC 70, 100)



Model	Pad dia. φd	Rc	M	B	L1	L2	L3	Stroke S	H1	H2	G	Spring force (N)	Mass (g)
VPC 10S-6J	10	-	M14x1	60.5	9	27	20	6	17	12	4	3.92-5.88	34
VPC 15S-6J	15	-	M14x1	60.5	9	27	20	6	17	12	4	3.92-5.88	34.5
VPC 20S-6J	20	-	M14x1	66.5	15	33	20	6	17	12	4	7.84-9.80	36
VPC 25S-6J	25	-	M14x1	66.5	15	33	20	6	17	12	4	7.84-9.80	37.5
VPC 30S-6J	30	-	M14x1	66.5	15	33	20	6	17	12	4	7.84-9.80	38.5
VPC 35S-6J	35	-	M14x1	79.5	28	46	33	6	17	12	4	7.84-9.80	80.5
VPC 50S-6J	50	-	M14x1	79.5	28	46	33	6	17	12	4	7.84-9.80	141.5
VPC 70S-01	70	Rc1/8	M22x1	86	30	57	26	10	27	22	6	11.8-14.7	380.5
VPC 100S-01	100	Rc1/8	M22x1	86	30	57	26	10	27	22	6	11.8-14.7	580



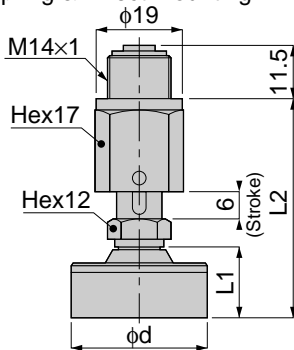
Spring type
Vacuum Port
side A Details
(VPD 70, 100)



Model	Pad dia. φd	Rc	M	B	L1	L2	L3	Stroke S	E1	E2	H1	H2	G	Spring force (N)	Mass (g)
VPD 10S-6J	10	-	M14x1	59	9.5	36	20	6	12.5	12.5	17	14	4	3.92-5.88	46.5
VPD 15S-6J	15	-	M14x1	59	9.5	36	20	6	12.5	12.5	17	14	4	3.92-5.88	47
VPD 20S-6J	20	-	M14x1	65	15.5	42	20	6	19.5	12.5	17	14	4	7.84-9.80	48.5
VPD 25S-6J	25	-	M14x1	65	15.5	42	20	6	19.5	12.5	17	14	4	7.84-9.80	50
VPD 30S-6J	30	-	M14x1	65	15.5	42	20	6	19.5	12.5	17	14	4	7.84-9.80	51
VPD 35S-6J	35	-	M14x1	78	28	55	20	6	19.5	12.5	17	14	4	7.84-9.80	93
VPD 50S-6J	50	-	M14x1	78	28	55	20	6	19.5	12.5	17	14	4	7.84-9.80	154
VPD 70S-01	70	Rc1/8	M22x1	104	30	75	26	10	-	20	27	22	6	11.8-14.7	463.5
VPD 100S-01	100	Rc1/8	M22x1	104	30	75	26	10	-	20	27	22	6	11.8-14.7	663



Spring & Direct Mounting



Model	Pad dia. φd	L1	L2	Spring force (N)	Mass (g)
VPF 10S	10	9.5	41	8.83~12.7	
VPF 15S	15	9.5	41	8.83~12.7	
VPF 20S	20	15.5	48	8.83~12.7	
VPF 25S	25	15.5	48	8.83~12.7	
VPF 30S	30	15.5	48	8.83~12.7	
VPF 35S	35	28	60.5	8.83~12.7	
VPF 50S	50	28	60.5	8.83~12.7	



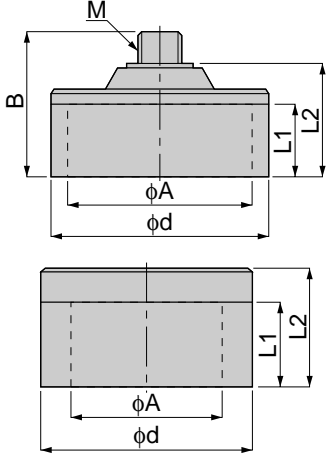
Vacuum Series Vacuum Pad Sponge Type

unit:mm



**VP
SPONGE**

Pad Rubber Only
(Sponge)



Model	Pad dia. φd	M	B	L1	L2	φA	Mass (g)
VP 10SA	10	M6×1	14	5	9.5	6	2
VP 15SA	15	M6×1	14	5	9.5	11	2
VP 20SA	20	M6×1	20	10	15.5	15	4
VP 25SA	25	M6×1	20	10	15.5	20	5.5
VP 30SA	30	M6×1	20	10	15.5	25	6
VP 35S	35	-	-	20	28	23	2
VP 50S	50	-	-	20	28	36	3.5
VP 70S	70	-	-	20	30	51	6.5
VP 100S	100	-	-	20	30	72	14.5
VP 35SA	35	-	-	20	30	23	34.5
VP 50SA	50	-	-	20	30	36	71.5
VP 70SA	70	-	-	20	30	51	153
VP 100SA	100	-	-	20	30	72	278

※ Adding "A" to the end of model code signifies frame attached.

