

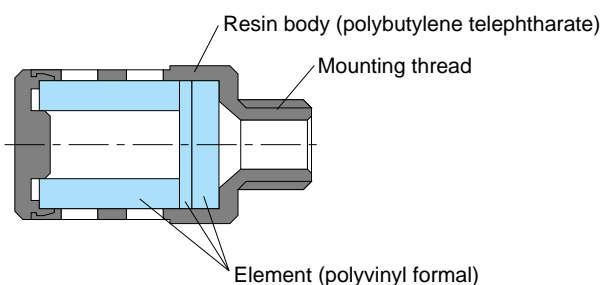
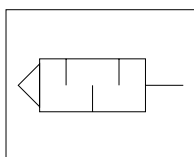
# Quick-Fitting Type Silencer

## Features

- The Silencer, connected to the exhaust port of a device, suppresses the exhaust noise.
- The Silencer displays an excellent noise suppression effect.
- Three types are available for your selection.
- The quick-fitting type is available.

## Construction

Graphical representation



## Specification

Fluid admitted	Air	
Service pressure range	0~150psi	0 ~ 0.9MPa
Service temperature range	32~140°F	0 ~ 60°C

## Model Designation (Example)



(1)Type  
(2)Port size

■ Pipe thread (SR)

Code	01	02	03	04
Size	G1/8	G1/4	G3/8	G1/2
Connecting female thread	Rc1/8	Rc1/4	Rc3/8	Rc1/2

■ Metric thread (SM)

Code	M5	M6	M10
Size (mm)	M5×0.8	M6×1	M10×1

■ Tube dia (ST)

Code	4	6	8
Size	φ4mm	φ6mm	φ8mm

## ⚠ Detailed Safety Instruction

Before using the PISCO bevice, be sure to read the "Safety Instructions", "Common Safety Instructions for Products Listed in This Manual" on pages 23~24 and "Common Safety Instructions for Controllers" on pages 167~168.

## ⚠ Caution

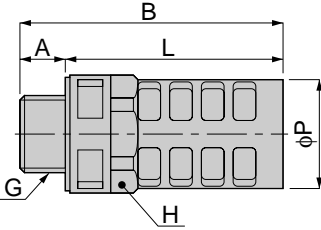
1. Clogging of the element raises resistance to exhaust, thus lowering the performance of the system as a whole or causing damage to the silencer.
2. When tightening the screw, observe the pertinent requirements in the Common Safety Instructions for Controllers. Since the body is made of resin and the outside is knurled, improper tightening may cause the looseness of the screw or damage to the body.
3. Replace the silencer body when the performance has dropped due to a stopped up element. Replacement of the element alone is not permitted.

# Control Series Silencer

unit:mm

## SR

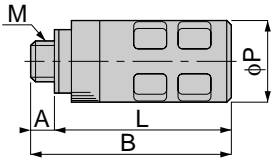
Taper thread Type



Model	G	A	B	L	φP	H	Mass (g)	Eff. a. (mm <sup>2</sup> )
SR 01	G1/8	6	28	22	15.5	-	2	11.5
SR 02	G1/4	8	38	30	17.5	-	3.5	18.4
SR 03	G3/8	10	58	48	26	24	12	70
SR 04	G1/2	12	66	54	29	27	15	95

## SM

Metric thread Type

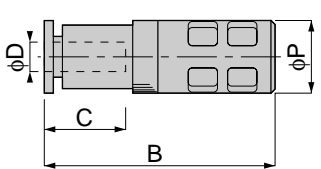


unit:mm

Model	M	A	B	L	φP	Mass (g)	Eff. a. (mm <sup>2</sup> )
SM 5	M5×0.8	3	23.5	20.5	10.5	3	3.8
SM 6	M6×1	4	24.5	20.5	10.5	3.5	4.6
SM 10	M10×1	5	20.5	15.5	15.5	6.5	9.1

## ST

Quick-Fitting Type



unit:mm

Model	Tube dia. φD	B	φP	C	Mass (g)	Eff. a. (mm <sup>2</sup> )
ST 4	4	30	10.5	11	5.5	4.6
ST 6	6	34.5	15.5	11.5	3	11.5
ST 8	8	48.5	17.5	17.5	6.5	18.4